

District Security Management Plan & Vulnerability Mapping

**Kunal
CEO Goa**



Structure of Presentation

- Basic Concepts
- ECI Guidelines
- Stages of Vulnerability Mapping
- Sector Officer
- District Action Plan
- Vulnerability Mapping Formats
- Polling Day Activities
- Components of DSMP



Vulnerability

“Susceptibility of any voter or section of voters whether or not living in a geographically identifiable area, to be wrongfully prevented from or influenced upon in relation to the exercise of his right to vote in a free and fair manner, through intimidation of use of any kind of undue influence or force on the voter.”



Legal Background under Election Laws

- **Sec 171C of IPC:** Undue influence at elections is an electoral offence. ~~Any voluntary interference or attempt at interfering with the free~~ exercise of any electoral right constitutes the crime of undue influence at an election
- **Sec 123(2) of R. P. Act, 1951:** Any direct or indirect interference or attempt to interfere on the part of the candidate or his agent or of any other person with consent of the candidate or his election agent with the free exercise of any electoral right as a corrupt practice.



Parameters

Mapping Exercise to Start at least 6 months before end of term.

- Prepoll Complaints: political rivalry
- MCC Violations: extent and repetition
- Sector Officer's VM Report
- Crossing checking of VM Reports by SDM/SDPO/EM/PI
- Worry Lists submitted by Political Parties/Candidates
- Alternate sources of information: media, call centre, social media



Three Stages of Vulnerability Mapping

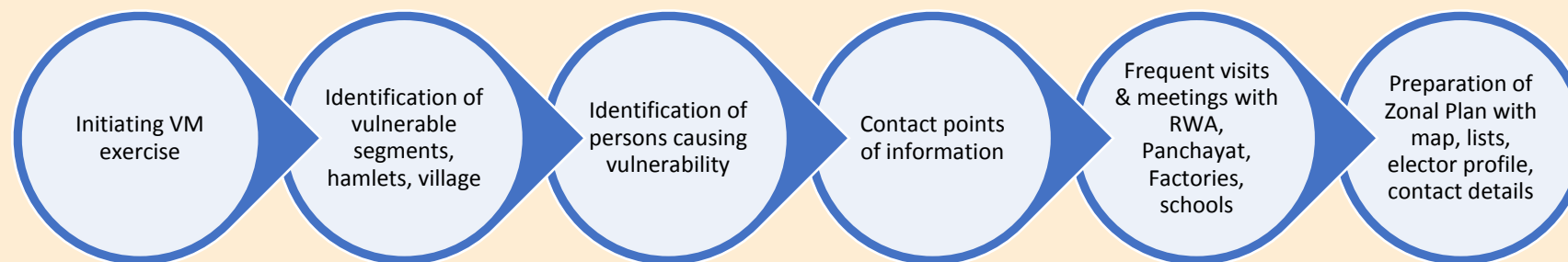
- Identification of voters/segments
- Identification of Persons causing vulnerability
- Preventive Measures against Persons causing vulnerability



Sector Officer/Sector Magistrate

- One SO per 10-12 Polling Station (not locations) depending on terrain & access assisted by one Sector Police Officer (ASI/HC rank).
Designated Police Officer at Thana Level

- Conferment of powers of Special Executive Magistrate
- Pre-poll Responsibilities



- Polling Day: Frequent Checking of areas on voting, alert RO in case of obstructions etc



District Action Plan on Vulnerability

- DEO & SP/CP jointly review & finalise focussed action plan in non-partisan manner to ensure obstruction do not happen on poll day.
- Action may include:
 - Binding Down
 - Preventive Detention
 - Confiscation of Arms
 - Forcing appearance at police stations at reasonable intervals
 - Placing police pickets & mobile team
 - Regular confidence building visits including joint tour of DEO/SP, SDM/SDPO
 - Regular feedback from District Intelligence, Control Room, Media, SM, Informers
- Monitoring of EPIC snatching or depositing before poll



District Action Plan on Vulnerability contd.

- For cluster of vulnerable pockets/hamlets DEO to place dedicated team and locate strategically
- Awareness generation among weaker sections esp females
- Formation of Village Level/Ward Level Awareness Group to mobilise them to gather information of intimidation in area and to create confidence building measures in area.
- 24*7 surveillance through FSTs/SSTs/VVTs
- Area Domination Plan by CPF. On day of Polling Commandant/ AC to visit vulnerable locations



Reporting Formats

- **VM-2(SO):** Proforma for checking and determining vulnerability by Sector Officer
- **VM-3(SO):** Polling Station wise format for enlisting Vulnerable Localities/Pockets/Voter Segments and list of intimidators
- **VM-4(SO):** Summary of Polling Station wise enlisting of Vulnerable Localities/Pockets/Voter Segments and of intimidators by SO
- **VM-5(SO):** Certificate by Sector Officer/SM/ASI/HC
- **VM-6 (RO):** Summary of vulnerability and list of persons causing vulnerability by RO
- **VM-7 (DEO):** Report on identification of vulnerability and action taken at district level

CEO to compile the information and send to ECI within 10 days of announcement of election



Polling Day

- Briefing of Presiding Officer by RO about Vulnerability
- SO to brief on abnormal low voting among vulnerable sections to RO for scrutiny
- SM & Mobile Forces shall visit vulnerable location at least twice
- Observers & Senior Officers shall pay special attention to these locations during inspections
- Police Parties/ CPF shall regularly patrol vulnerable localities



Confidentiality

No Press Conference or any divulging of information relating to Vulnerability Mapping, Vulnerable Areas, Hamlets, Troublemakers or deployment of security forces to be done by any officer.



DISTRICT SECURITY MANAGEMENT PLAN



“By failing to prepare, you are preparing to fail.”

-Benjamin Franklin



Why?

- Importance of Security Management in Free & Fair Election
- Reducing Vulnerability
- Personnel Management of
 - District Police Personnel
 - State Armed Police
 - Central Paramilitary Forces
 - Home Guard/Civil Defence Volunteers
- Voting Rights of Personnel Deployed on Election Duty



Security Management

- Vulnerability Mapping:
 - ❖ ~~Deployment of Thana Nodal Officer, Sector Police Officer~~
 - ❖ District Action Plan
- Projection of requirement of Armed Police, CPF, Home Guards
- Strengthening of Election Branch at Thana Level & District Level :
 - Nodal Officers for preparation & compilation of different reports
 - Nodal Officers for timely conveying various permissions required from Police
- Reporting & Monitoring Channel & Communication medium:
Strengthening of IT systems, Wireless Communication, Mobile Platforms
- Manpower for FST/SST/VVT, Police Nakas



H.R. Management of Security Personnel

- Stay & Food arrangement of Officers & Subordinate Staff arriving from outside
- Budgeting for Honorarium of all deployed persons in advance
- Back Office with clerical support for reporting and monitoring by SAP/CPF
- Linkages with Nearby Hospital/Air Ambulance
- Arrival, Departure & Local Area Patrolling Movement Plan
- Communication Plan
- Training of DOs & DONTs and SOP to all officials. Extensive Training of Nodal Officers on Election Laws & Procedures



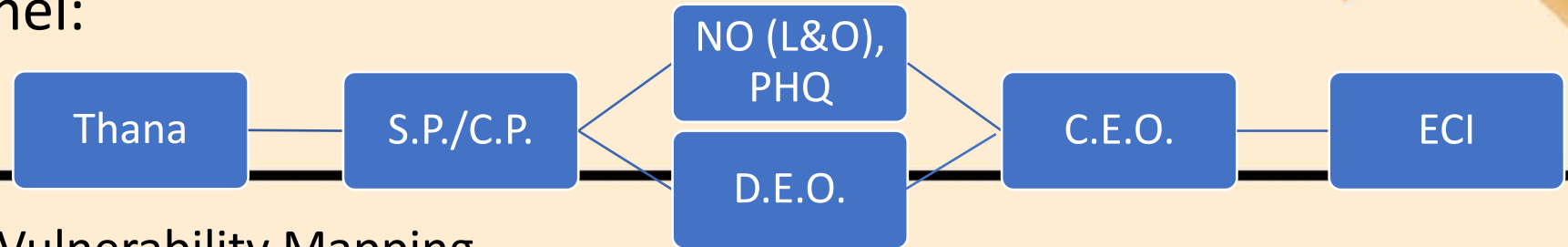
Deployment Plan & Directory

- Deployment Standards for different category of Polling Stations
- Security Management Atlas
- Route Chart for each Party, Squad
- Directory of officials detailed for each party & squad
- Directory of Senior District Level Officers, CEO Office
- Multimodal Communication Plan for each Party through different mediums- Wireless, Mobile Phones, Runners etc



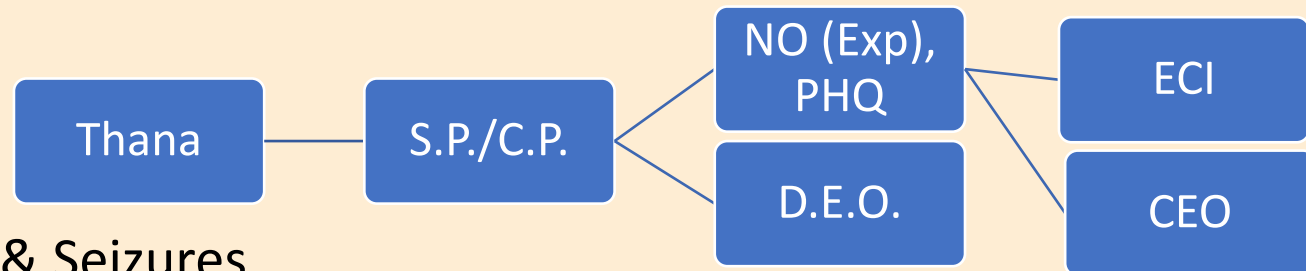
Reports to be prepared from Police

- Reporting Channel:



- All Reports on Vulnerability Mapping
- MCC-I & MCC-II
- LOR- I & LOR –II

- Reporting Channel:



- Daily Report on Search & Seizures
- Daily Report on Activities of FST/SSTs



Voting Rights of Persons on Election Duty

- Distribution of Postal Ballots /Election Duty Slips to Persons on Election Duty if they are voters in Assembly Constituencies going for voting.
- Organisation of Special Camps in consultation with DEO
- Brief training to officials on method of casting vote by Postal Ballot/EDC so that their votes do not become invalid



Thank You

