



ANGLER LODGES AND REST HOUSES IN HIMACHAL PRADESH.



DEPARTMENT OF FISHERIES, HIMACHAL PRADESH.

Website: www.hpfisheries.nic.in Email: fisheries-hp@nic.in

INTRODUCTION

Angling is used for fishing with an %angle+which means a %ish hook+. World over, angling is a popular recreational hobby which help in relieving stress and enhances concentration. In our beautiful state the pleasure of angling doubles manifold with interlocking, snow capped mountains, dense conifers and gushing rivers and rivulets. Anglers from within the state and outside visit Himachal to enjoy their luck with hook and line. In an effort to make their stay comfortable and memorable, Department of Fisheries Himachal Pradesh has setup rest houses and angler lodges at various strategic angling spots all over the state. Request for booking must come at least a week before the visit during working hours (10.00 am to 5.00 pm IST except all gazetted holidays) A brief account of the same is as follows:



REST HOUSE DEOLI (GHAGUS)

Distt:	Bilaspur
Location:	Carp Seed Farm, Deoli (Ghagus) NH-21
Distance from Distt. HQ:	12 km (half an hour run)
Establishment Year:	1960
Facilities:	4 suits, Drive in with parking
Booking office:	Assistant Director Fisheries, Bilaspur
Contact Number:	01978-222568
Email id:	adfiseriesbil-hp@nic.in
Waters:	General
Fishing Close-season:	Every year from 1 st June to 31 st July
Best Angling Spots:	Gambhar & Seer Khad (Tributaries of Gobind Sagar) Bhakra (Main Gobind Sagar Reservoir) (35-95 km from rest house)



ANGLER LODGE BAROT

Distt:	Mandi
Location:	1 km ahead of Trout Farm Barot
Distance from Distt. HQ:	66 km (4 hour run)
Establishment Year:	2009
Facilities:	2 suits Drive in with parking
Booking office:	Assistant Director Fisheries, Mandi
Contact details:	01905-235141
Email id	adfiseries-man@nic.in
Waters:	Trout
Fishing Close-season:	Every year from 1 st November to last day of February
Best Angling Spots:	Uhl & Lamba dug rivers (1km from angler lodge)



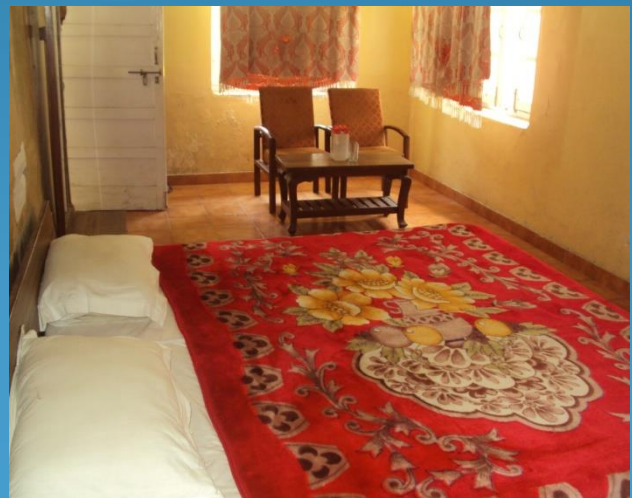
REST HOUSE-CUM-TRAINING CENTRE PATLIKUHL

Distt:	Kullu
Location:	Trout Farm, Patlikuhl NH-21
Distance from Distt. HQ:	22 km (one hour run)
Establishment Year:	2005
Facilities:	3 suits & Dormitory, Drive in with parking
Booking office:	Deputy Director Fisheries, Patlikuhl
Contact details:	01902-240163
Email id:	ddfiseries-kul-hp@nic.in
Waters:	Trout
Fishing Close-season:	Every year from 1 st November to last day of February
Best Angling Spots:	16-mile, 15-mile, Patlikuhl, Katrian, Raison, (10-15 km from rest house)



REST HOUSE KANGRA

Distt:	Kangra
Location:	Carp Farm, Kangra
Distance from Distt. HQ:	1 km (at a walking distance)
Establishment Year:	1965
Facilities:	2 suits, Drive in with parking
Booking office:	Assistant Director Fisheries, Palampur
Contact details:	01894-231872
Email id:	adfiseries-pal-hp@nic.in
Waters:	Trout and General
Fishing Close-season:	Every year from 1 st November to last day of February (Trout waters) Every year from 1 st June to 31 st July (General waters)
Best Angling Spots:	Chamba Pattan, Nagrota Surian, Lamba Dug, Lohardi, (20-130 km)



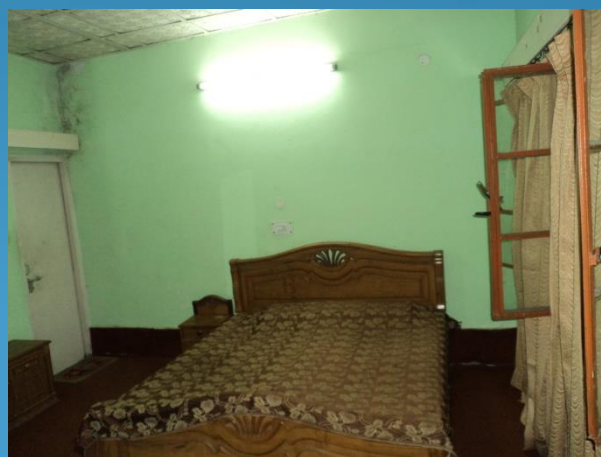
ANGLER LODGE PONG DAM

Distt:	Kangra
Location:	Pong Reservoir, Kangra
Distance from Distt. HQ:	1 km (at a walking distance)
Establishment Year:	2005
Facilities:	5 suits, Drive in with parking
Booking office:	Assistant Director Fisheries, Pong Reservoir
Contact details:	01893-201282
Email id:	adfiseries-pal-hp@nic.in
Waters:	General
Fishing Close-season:	Every year from 1 st June to 31 st July
Best Angling Spots:	Pong Reservoir



ANGLING HUT SULTANPUR

Distt:	Chamba
Location:	Carp Farm, Sultanpur
Distance from Distt. HQ:	5 (15 minutes run)
Establishment Year:	2000
Facilities:	2 suits, Drive in with parking
Booking office:	Assistant Director Fisheries, Chamba
Contact details:	01899-223801
Email id:	adfiseries-cha-hp@nic.in
Waters:	Trout and General
Fishing Close-season:	Every year from 1 st November to last day of February (Trout waters) Every year from 1 st June to 31 st July (General waters)
Best Angling Spots:	Chamera, Ranjit Sagar and Ravi river (1.5 km-82 km from Angling Hut)



ANGLING HUT HOLI

Distt:	Chamba
Location:	Trout Farm, Holi
Distance from Distt. HQ:	80 km (4 hours run)
Establishment Year:	2014
Facilities:	2 suits, Drive in with parking
Booking office:	Assistant Director Fisheries, Chamba
Contact details:	01899-223801
Email id:	adfiseries-cha-hp@nic.in
Waters:	Trout
Fishing Close-season:	Every year from 1 st November to last day of February (Trout waters)
Best Angling Spots:	Ravi and its tributaries (walking distance)



RENT OF REST HOUSES/ ANGLER LODGES

#	Category	Rate per day/ per set (Rs.)
1.	Government servants including MLA, MP on tour	80/-
2.	HP Government officer/officials on duty	80/-
3	HP Government officer/officials (while on leave with his or her family)	120/-
4	Anglers possessing angling license for fishing with rod and line	80/-
5	Private persons	500/-
6	Retired HP Govt. officers/ officials, former MP/MLA of the state and their family	120/-

Atithi devo bhava!



Looking forward for your visit soon.....

HAPPY FISHING

