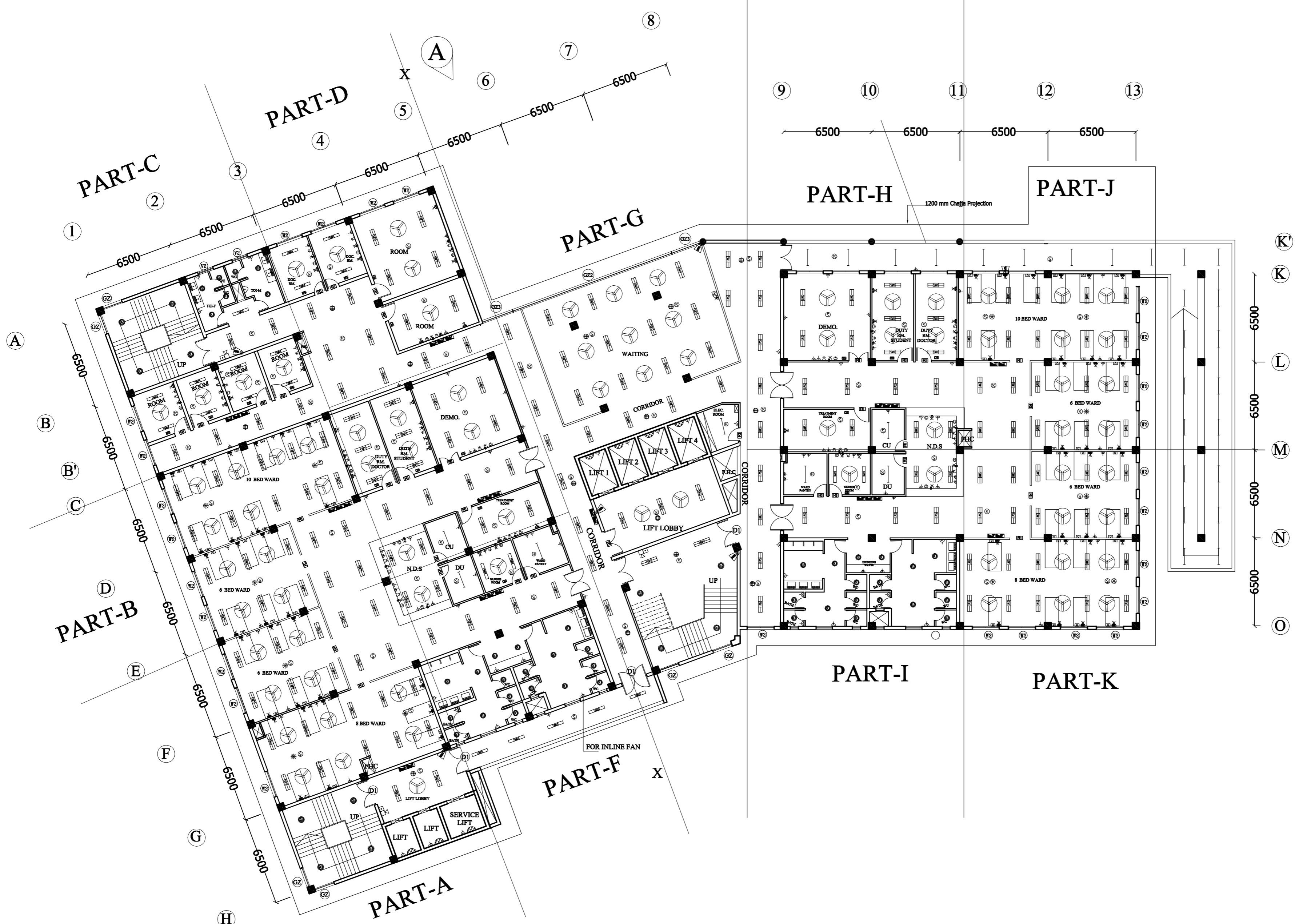


This drawing with all its contents is the sole intellectual property of the Hospital Services Consultancy Corporation (India) Ltd. Copying or its use in any form whatsoever without the written permission of HSCC is prohibited.

NOTES



FOURTH FLOOR PLAN

PROJECT

MEDICAL COLLEGE
ATNAHAN,
HIMACHAL PRADESH

TITLE

TENDER DRAWING
HOSPITAL BLOCK
FOURTH FLOOR
PLAN

ELECTRICAL LAYOUT

HSCC/D&E/HOSPITAL BLOCK/NAHAN/TD/EL-08
DRAWING NO.

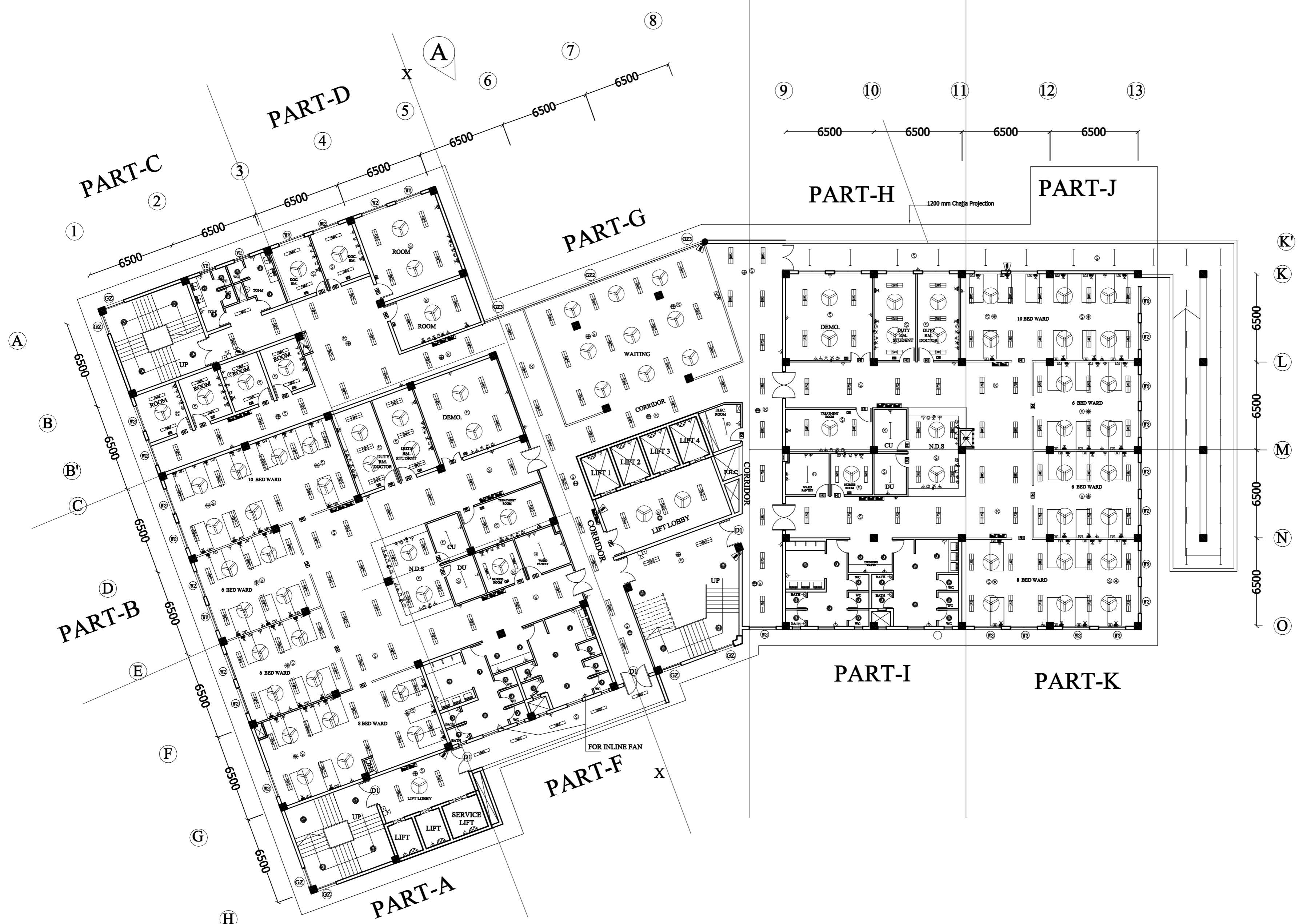
JOB NO.	NTS SCALE	DATE
App by	Rev. by	Prep. by

HOSPITAL SERVICES CONSULTANCY
CORPORATION (INDIA) LIMITED
(A GOVERNMENT OF INDIA ENTERPRISES)

HSCC
NEW DELHI INDIA

This drawing with all its contents is the sole intellectual property of the Hospital Services Consultancy Corporation (India) Ltd. Copying or its use in any form whatsoever without the written permission of HSCC is prohibited.

NOTES



FIFTH FLOOR PLAN

PROJECT

MEDICAL COLLEGE
ATNAHAN,
HIMACHAL PRADESH

TITLE

TENDER DRAWING
HOSPITAL BLOCK
FIFTH FLOOR
PLAN
ELECTRICAL LAYOUT

HSCC/D&E/HOSPITAL BLOCK/NAHAN/TD/EL-09
DRAWING NO.

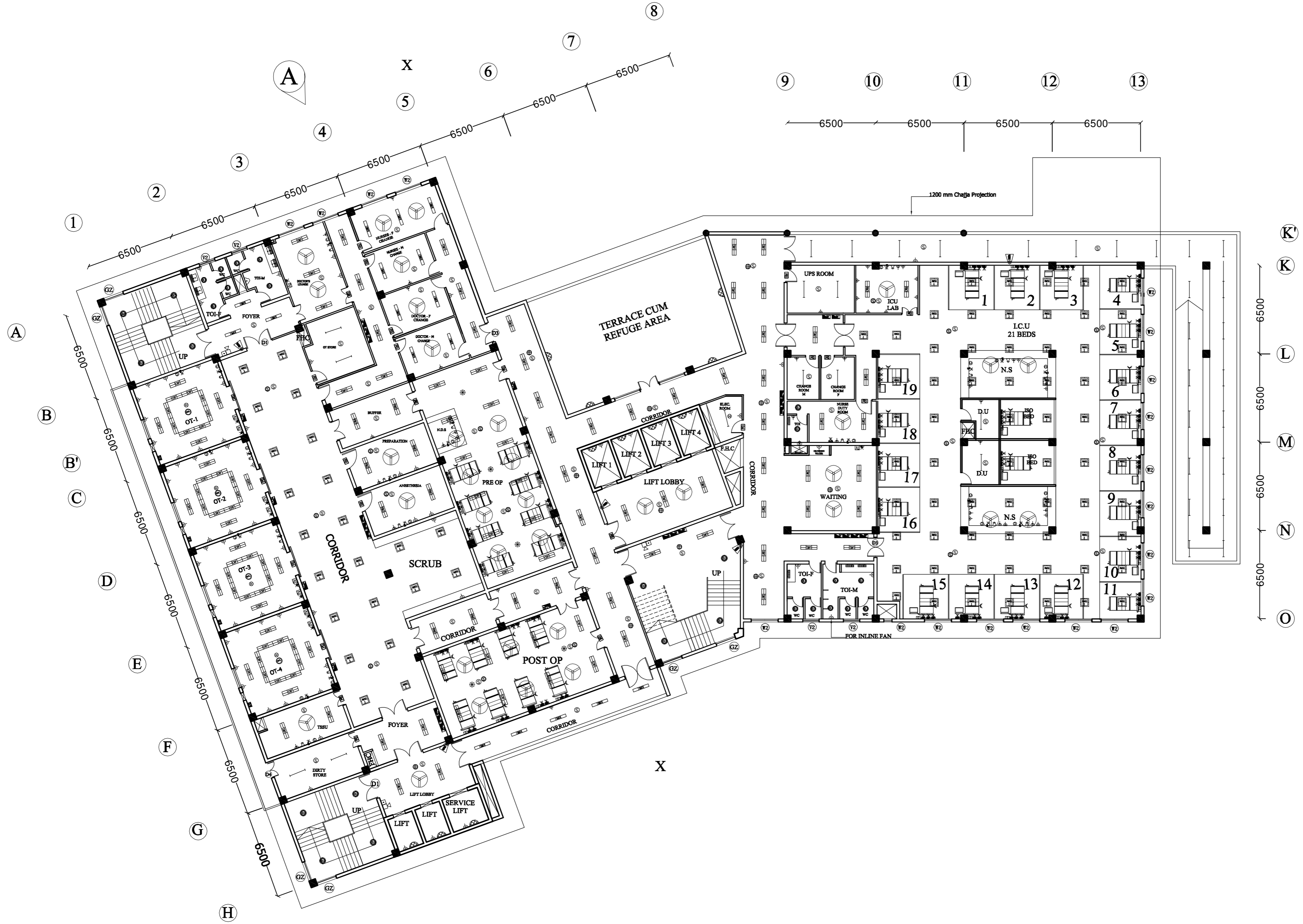
JOB NO.	NTS SCALE	DATE
App by	Rev. by	Prep. by

HOSPITAL SERVICES CONSULTANCY CORPORATION (INDIA) LIMITED
(A GOVERNMENT OF INDIA ENTERPRISES)

HSCC
NEW DELHI INDIA

This drawing with all its contents is the sole intellectual property of the Hospital Services Consultancy Corporation (India) Ltd. Copying of this drawing or part thereof or its use in any form whatsoever without the written permission of HSCC is prohibited.

NOTES



SIXTH FLOOR PLAN

PROJECT

MEDICAL COLLEGE
ATNAHAN,
HIMACHAL PRADESH

TITLE

TENDER DRAWING
HOSPITAL BLOCK
SIXTH FLOOR
PLAN
ELECTRICAL LAYOUT

HSCC/D&E/HOSPITAL BLOCK/ATNAHAN/TD/EL-10
DRAWING NO.

JOB NO.	NTS SCALE	DATE
App by	Rev. by	Prep. by

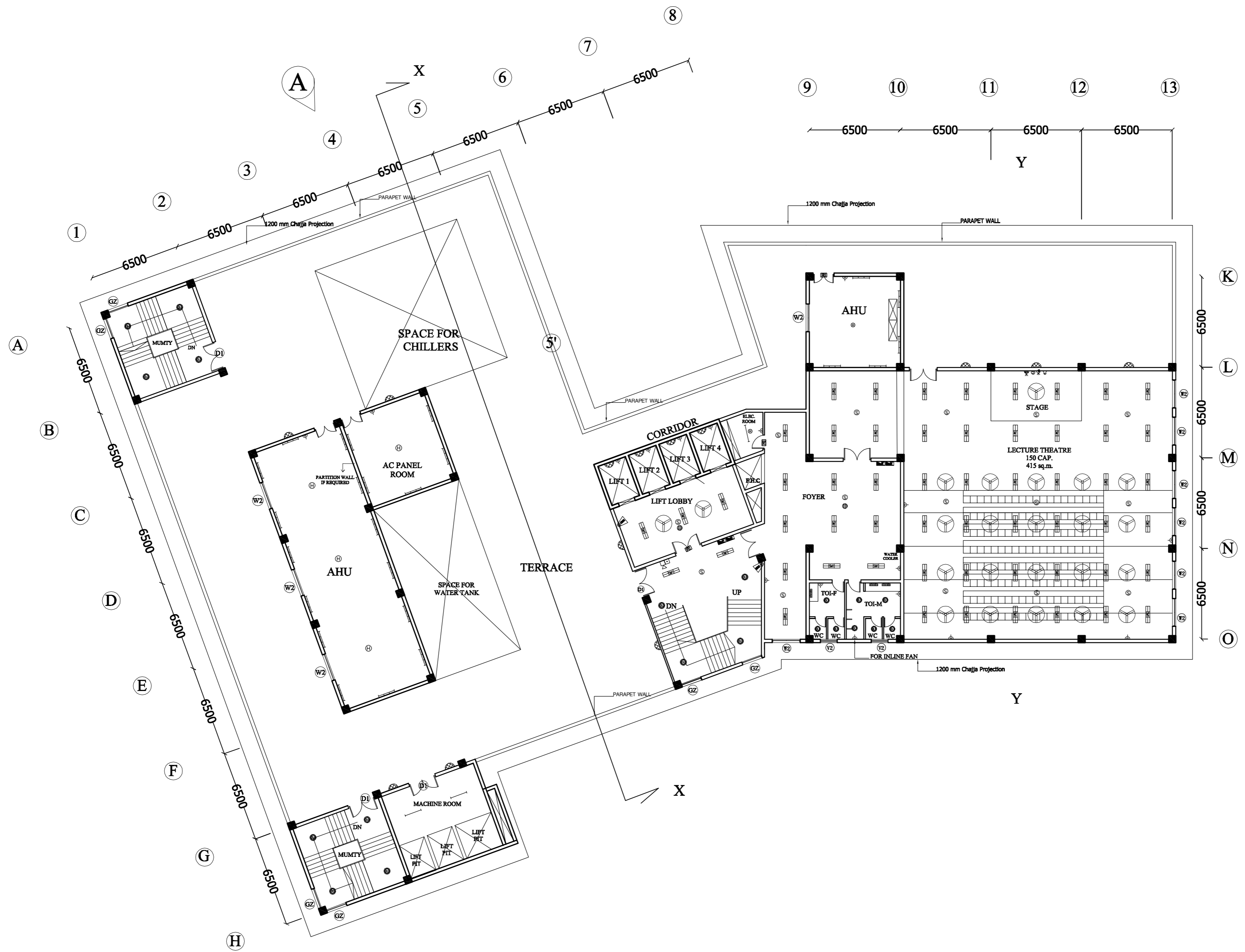
HOSPITAL SERVICES CONSULTANCY CORPORATION (INDIA) LIMITED
(A GOVERNMENT OF INDIA ENTERPRISES)

HSCC

NEW DELHI INDIA

This drawing with all its contents is the sole intellectual property of the Hospital Services Consultancy Corporation (India) Ltd. Copying of this drawing or part thereof or its use in any form whatsoever without the written permission of HSCC is prohibited.

NOTES



SEVENTH FLOOR PLAN

PROJECT

MEDICAL COLLEGE
ATNAHAN,
HIMACHAL PRADESH

TITLE

TENDER DRAWING
HOSPITAL BLOCK
SEVENTH FLOOR
PLAN
ELECTRICAL LAYOUT

HSCC/D&E/HOSPITAL BLOCK/NAHAN/TD/EL-011
DRAWING NO.

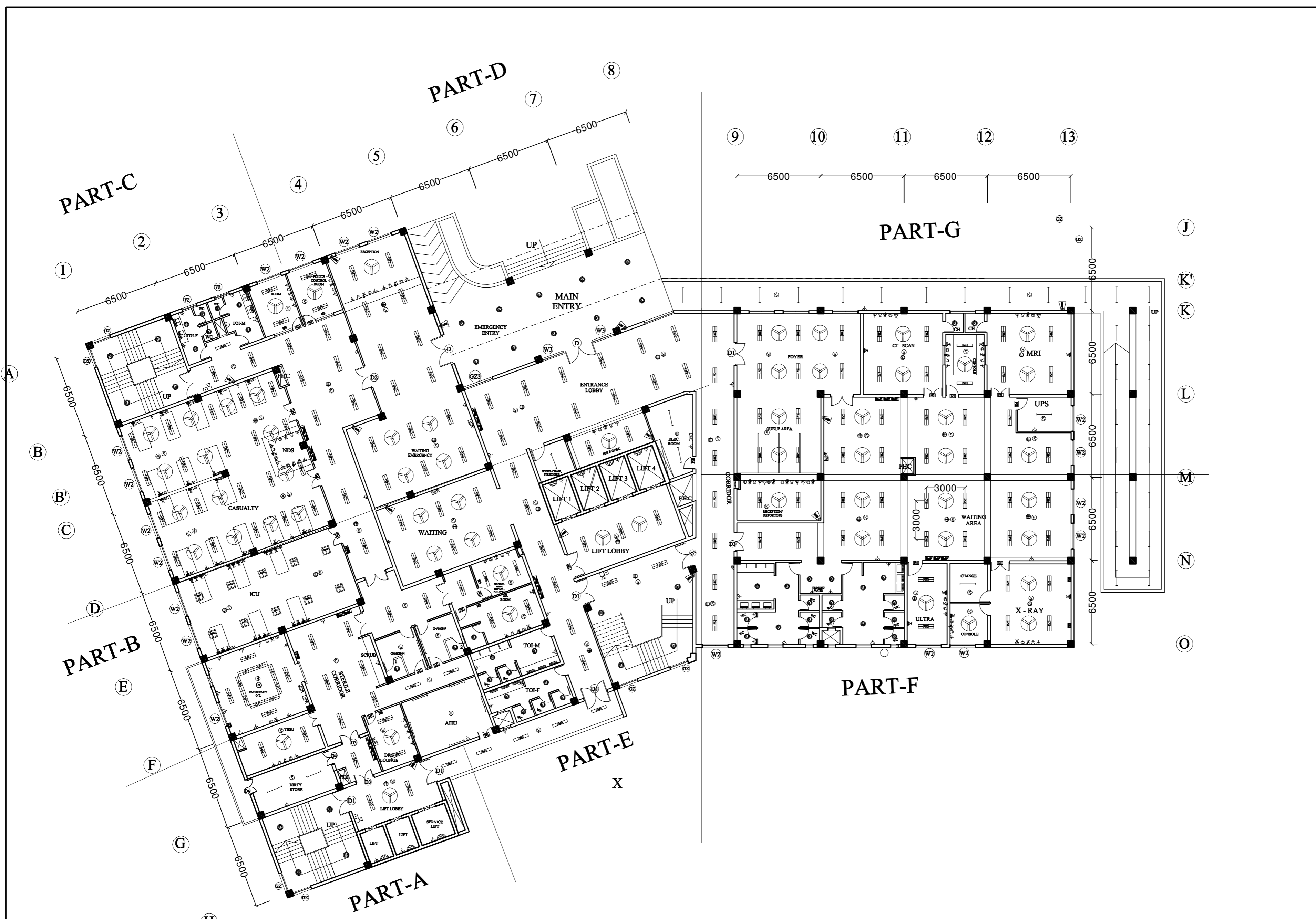
JOB NO.	NTS SCALE	DATE
App by	Rev. by	Prep. by

HOSPITAL SERVICES CONSULTANCY CORPORATION (INDIA) LIMITED
(A GOVERNMENT OF INDIA ENTERPRISES)

HSCC
NEW DELHI INDIA

This drawing with all its contents is the sole intellectual property of the Hospital Services Consultancy Corporation (India) Ltd. Copying of this drawing or part thereof or its use in any form whatsoever without the written permission of HSCC is prohibited.

NOTES



GROUND FLOOR PLAN

PROJECT

**MEDICAL COLLEGE
ATNAHAN,
HIMACHAL PRADESH**

TITLE

**TENDER DRAWING
HOSPITAL BLOCK**

**GROUND FLOOR
PLAN
ELECTRICAL LAYOUT**

HSCC/D&E/HOSPITAL BLOCK/NAHAN/TD/EL-04
DRAWING NO.

JOB NO.	NTS SCALE	DATE
App by	Rev. by	Prep. by

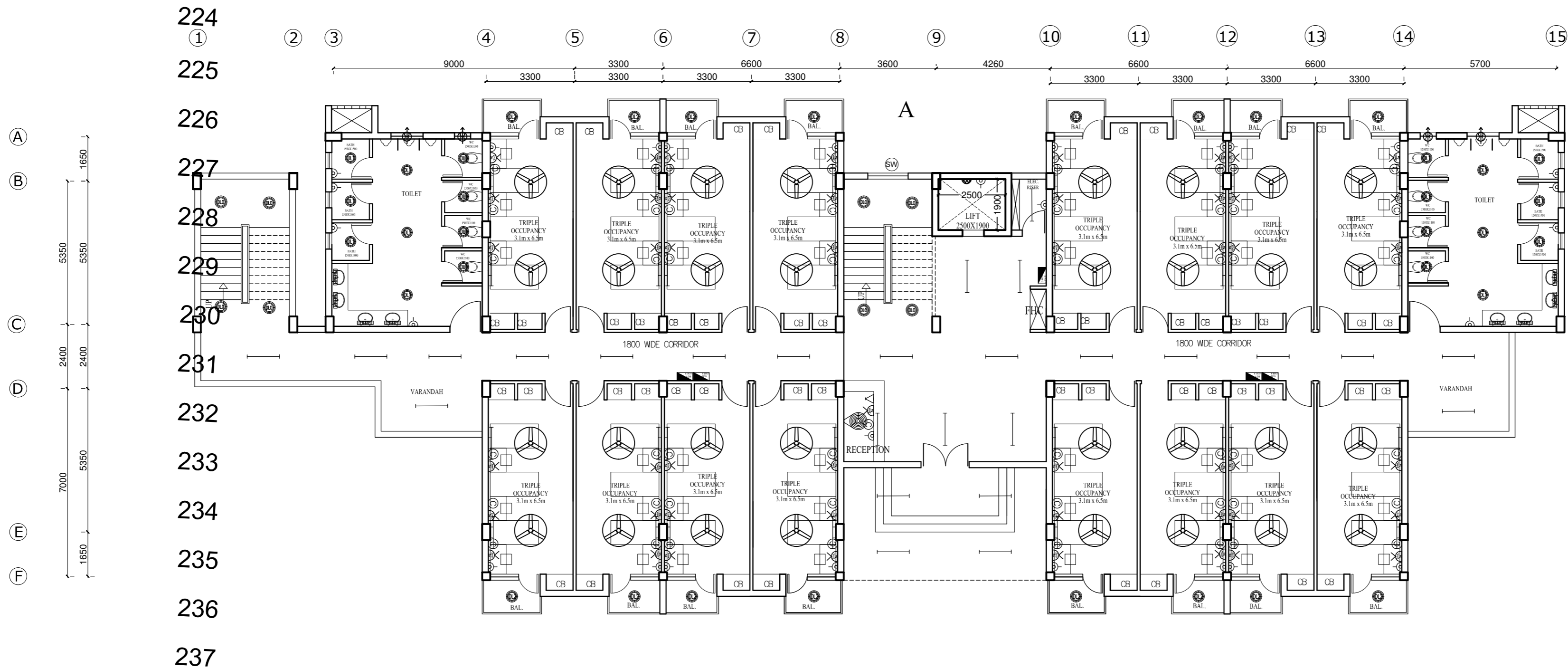
HOSPITAL SERVICES CONSULTANCY
CORPORATION (INDIA) LIMITED
(A GOVERNMENT OF INDIA ENTERPRISES)

HSCC
NEW DELHI INDIA

This drawing with all its contents is the sole intellectual property of the Hospital Services Consultancy Corporation (India) Ltd. Copying of this drawing or part thereof for its use in any form whatsoever without the written permission of HSCC is prohibited.

NOTES

BLOCK - A



GROUND FLOOR PLAN
AREA = 735 sq.m.

S.NO.	FLOOR	NO. OF ROOMS	OCCUPANCY	BED STRENGTH	FLOOR AREA
1.	-2 FLOOR	9	TRIPLE	27	448.0 sq.m.
2.	-1 FLOOR	9	TRIPLE	27	448.0 sq.m.
3.	GROUND FLOOR	16	TRIPLE	48	734.0 sq.m.
4.	FIRST FLOOR	18	DOUBLE	36	590.0 sq.m.
5.	SECOND FLOOR	18	DOUBLE	36	590.0 sq.m.
6.	THIRD FLOOR	18	DOUBLE	36	590.0 sq.m.
	TOTAL	88		210	3400.0 sq.m.

NO. OF BLOCKS = 2
TOTAL HOSTEL AREA = 3400 x 2 = 6800 sq.m.+ 565 sq.m.(Mess) = 7365 sq.m.

GR. = 48 @ 3/RM
1ST. = 54 @ 3/RM
2ND. = 36 @ 2/RM
3RD. = 36 @ 2/RM
3RD. = 36 @ 2/RM

TOTAL = 210 / BLOCK

PROJECT

MEDICAL COLLEGE
AT NAHAN,
HIMACHAL PRADESH

TITLE

TENDER DRAWING

UG HOSTEL (A)BLOCK

GROUND
FLOOR PLAN
ELECTRICAL LAYOUT

HSCC/D&E/UG HOSTEL(A)/NAHAN/TD/EL-202
DRAWING NO.

JOB NO.	NTS SCALE	DATE
---------	--------------	------

App by	Rev. by	Prep. by
--------	---------	----------

HOSPITAL SERVICES CONSULTANCY
CORPORATION (INDIA) LIMITED
(A GOVERNMENT OF INDIA ENTERPRISES)

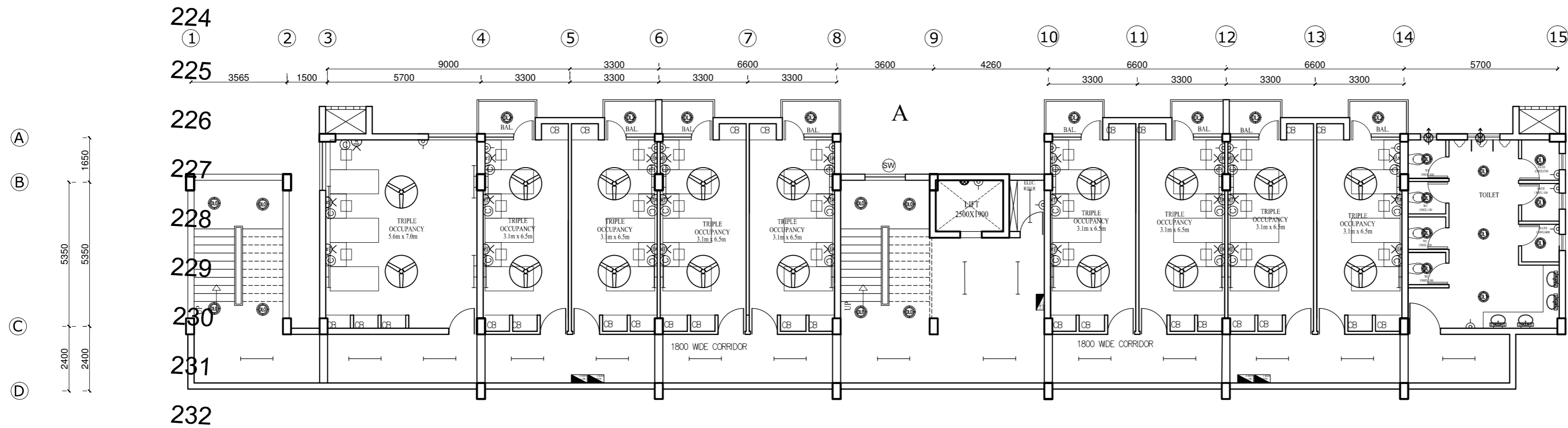
HSCC

NEW DELHI INDIA

This drawing with all its contents is the sole intellectual property of the Hospital Services Consultancy Corporation (India) Ltd. Copying of this drawing or part thereof for its use in any form whatsoever without the written permission of HSCC is prohibited.

NOTES

BLOCK - A



-1,-2 FLOOR LVL PLAN
AREA = 448 sq.m.

PROJECT

MEDICAL COLLEGE
AT NAHAN,
HIMACHAL PRADESH

TITLE

TENDER DRAWING

UG HOSTEL (A)BLOCK
TYPICAL -2 & -3
FLOOR LEVEL
ELECTRICAL LAYOUT

HSCC/D&E/UG HOSTEL(A)/NAHAN/TD/EL-201
DRAWING NO.

JOB NO.	NTS SCALE	DATE
---------	--------------	------

App by	Rev. by	Prep. by
--------	---------	----------

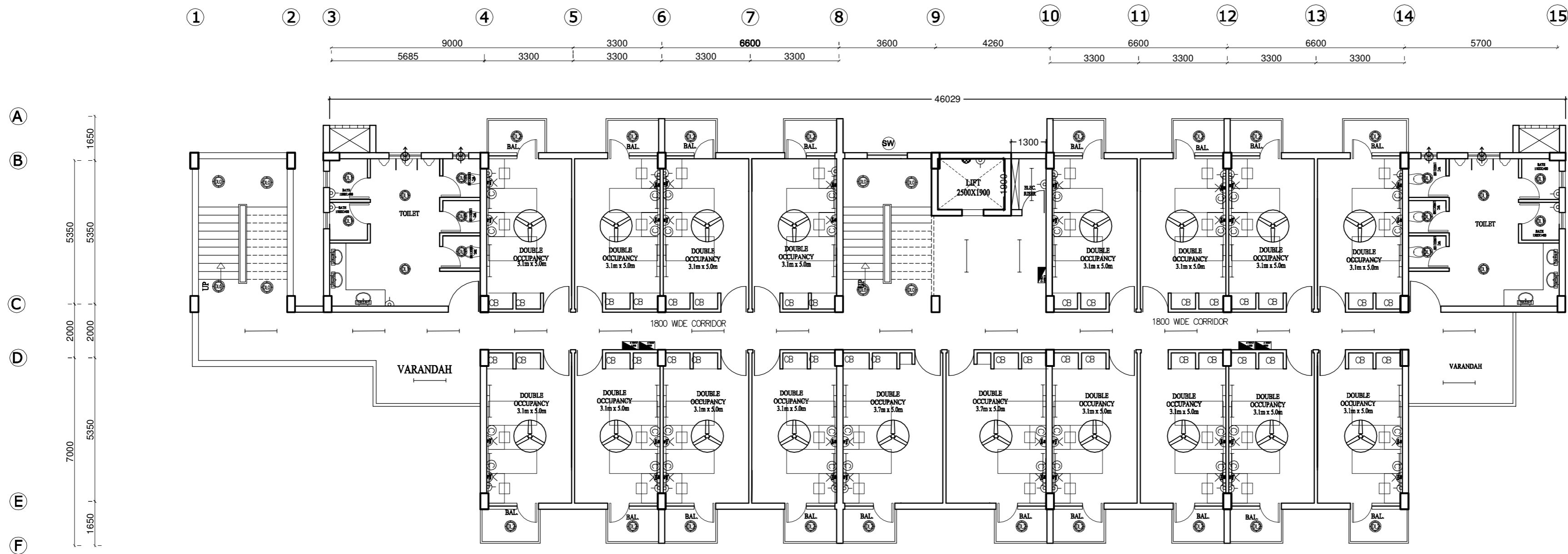
HOSPITAL SERVICES CONSULTANCY
CORPORATION (INDIA) LIMITED
(A GOVERNMENT OF INDIA ENTERPRISES)

HSCC
NEW DELHI INDIA

This drawing with all its contents is the sole intellectual property of the Hospital Services Consultancy Corporation (India) Ltd. Copying of this drawing or part thereof or its use in any form whatsoever without the written permission of HSCC is prohibited.

NOTES

BLOCK - A



FIRST TO THIRD FLOOR PLAN
AREA = 590.0 sq.m. / Floor

PROJECT

**MEDICAL COLLEGE
 ATNAHAN,
 HIMACHAL PRADESH**

TITLE

TENDER DRAWING

**UG HOSTEL (A) BLOCK
 TYPICAL 1ST TO 3RD
 FLOOR PLAN
 ELECTRICAL LAYOUT**

HSCC/D&E/UG HOSTEL (A)/NAHAN/TD/EL-203
 DRAWING NO.

JOB NO.	NTS SCALE	DATE
App by	Rev. by	Prep. by

HOSPITAL SERVICES CONSULTANCY
 CORPORATION (INDIA) LIMITED
 (A GOVERNMENT OF INDIA ENTERPRISES)

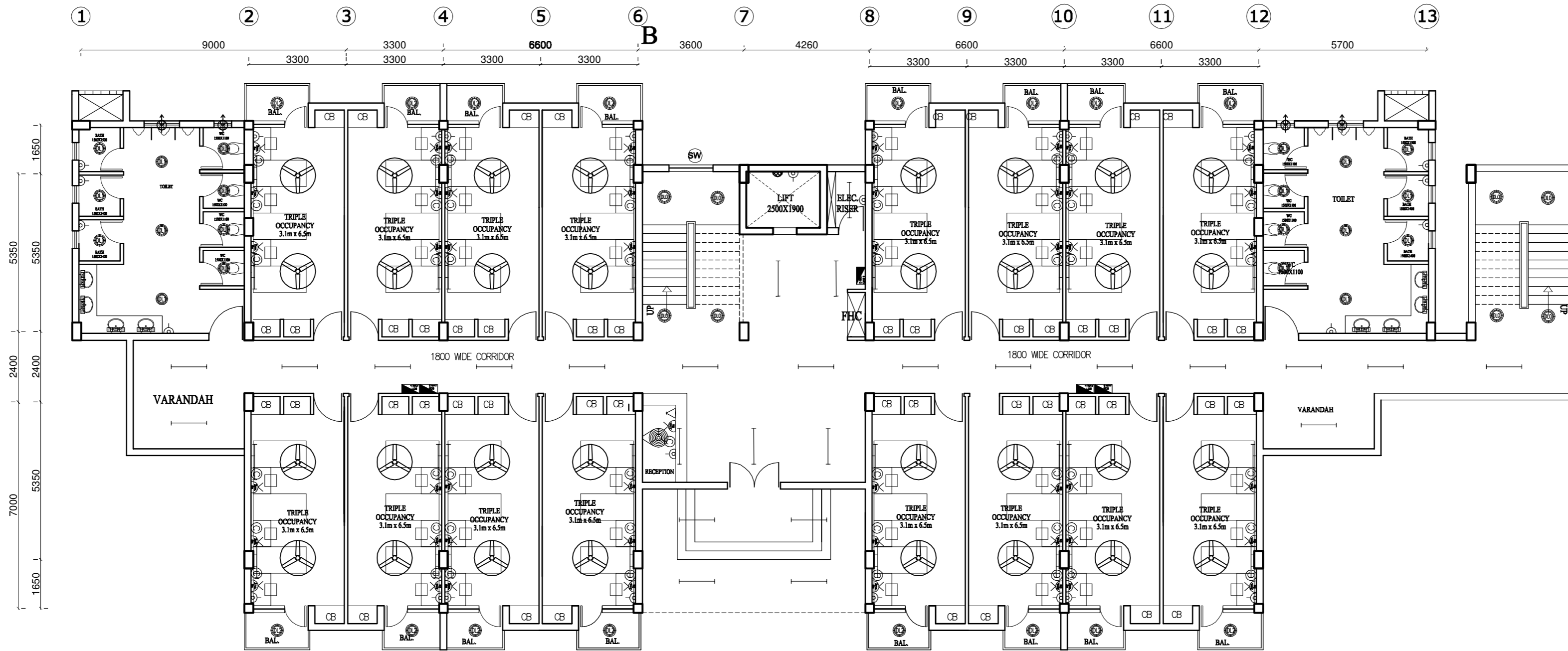
HSCC
 NEW DELHI INDIA

This drawing with all its contents is the sole intellectual property of the Hospital Services Consultancy Corporation (India) Ltd. Copying of this drawing or part thereof or its use in any form whatsoever without the written permission of HSCC is prohibited.

NOTES

BLOCK - B

224
225
226 A
227 B
228
229
230 C
231 D
232
233
234 E
235 F
236
237



GROUND FLOOR PLAN
AREA = 735 sq.m.

S.NO.	FLOOR	NO. OF ROOMS	OCCUPANCY	BED STRENGTH	FLOOR AREA
1.	-2 FLOOR	9	TRIPLE	27	448.0 sq.m.
2.	-1 FLOOR	9	TRIPLE	27	448.0 sq.m.
3.	GROUND FLOOR	16	TRIPLE	48	734.0 sq.m.
4.	FIRST FLOOR	18	DOUBLE	36	590.0 sq.m.
5.	SECOND FLOOR	18	DOUBLE	36	590.0 sq.m.
6.	THIRD FLOOR	18	DOUBLE	36	590.0 sq.m.
	TOTAL	88		210	3400.0 sq.m.

GR. = 48 @ 3/RM
1ST. = 54 @ 3/RM
2ND. = 36 @ 2/RM
3RD. = 36 @ 2/RM
3RD. = 36 @ 2/RM

TOTAL = 210 / BLOCK

NO. OF BLOCKS = 2
TOTAL HOSTEL AREA = 3400 x 2 = 6800 sq.m.+ 565 sq.m.(Mess) = 7365

FLOOR

PROJECT

MEDICAL COLLEGE
ATNAHAN,
HIMACHAL PRADESH

TITLE

TENDER DRAWING

UG HOSTEL (B)BLOCK
GROUND
FLOOR PLAN
ELECTRICAL LAYOUT

HSCC/D&E/UG HOSTEL(B)/NAHAN/TD/EL-302
DRAWING NO.

JOB NO.	NTS SCALE	DATE
---------	--------------	------

App by	Rev. by	Prep. by
--------	---------	----------

HOSPITAL SERVICES CONSULTANCY
CORPORATION (INDIA) LIMITED
(A GOVERNMENT OF INDIA ENTERPRISES)

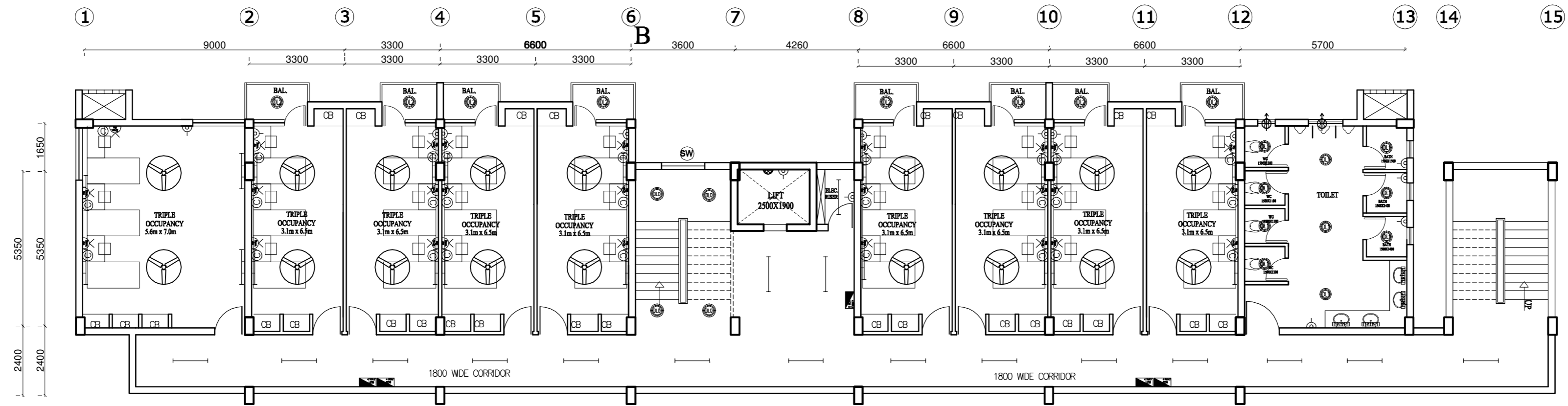
HSCC
NEW DELHI INDIA

This drawing with all its contents is the sole intellectual property of the Hospital Services Consultancy Corporation (India) Ltd. Copying of this drawing or part thereof or its use in any form whatsoever without the written permission of HSCC is prohibited.

NOTES

BLOCK - B

224
225
226
227
228
229
230
231
232
233
234
235
236
237



-1,-2 FLOOR LVL PLAN
AREA = 448 sq.m.

PROJECT

MEDICAL COLLEGE
ATNAHAN,
HIMACHAL PRADESH

TITLE

TENDER DRAWING

UG HOSTEL (B)BLOCK
TYPICAL -2 & -3
FLOOR LEVEL
ELECTRICAL LAYOUT

HSCC/D&E/UG HOSTEL(B)/NAHAN/TD/EL-301
DRAWING NO.

JOB NO.	NTS SCALE	DATE
App by	Rev. by	Prep. by

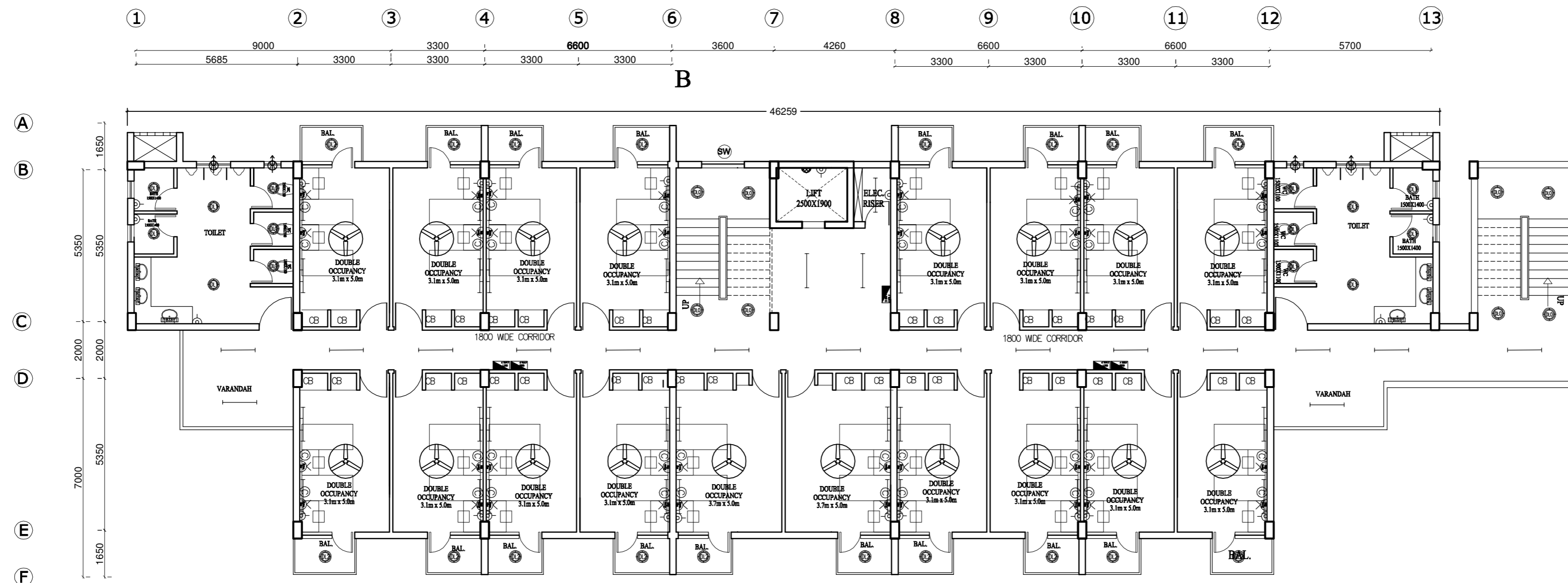
HOSPITAL SERVICES CONSULTANCY CORPORATION (INDIA) LIMITED
(A GOVERNMENT OF INDIA ENTERPRISES)

HSCC
NEW DELHI INDIA

This drawing with all its contents is the sole intellectual property of the Hospital Services Consultancy Corporation (India) Ltd. Copying of this drawing or part thereof or its use in any form whatsoever without the written permission of HSCC is prohibited.

NOTES

BLOCK - B



FIRST TO THIRD FLOOR PLAN
AREA = 590.0 sq.m. / Floor

PROJECT

MEDICAL COLLEGE
ATNAHAN,
HIMACHAL PRADESH

TITLE

TENDER DRAWING

UG HOSTEL (B) BLOCK
TYPICAL 1ST TO 3RD
FLOOR PLAN
ELECTRICAL LAYOUT

HSCC/D&E/UG HOSTEL (B)/NAHAN/TD/EL-303
DRAWING NO.

JOB NO.	NTS SCALE	DATE
App by	Rev. by	Prep. by

HOSPITAL SERVICES CONSULTANCY
CORPORATION (INDIA) LIMITED
(A GOVERNMENT OF INDIA ENTERPRISES)

HSCC
NEW DELHI INDIA

The drawing with all its contents is the sole intellectual property of the Hospital Services Consultancy Corporation (India) Ltd. Copying of this drawing or part thereof or its use in any form whatsoever without the written permission of HSCC is prohibited.

NOTES

PROJECT

MEDICAL COLLEGE
AT NAHAN,
HIMACHAL PRADESH

TITLE

TENDER DRAWING

TYPE-IV BLOCK

GROUND
FLOOR PLAN

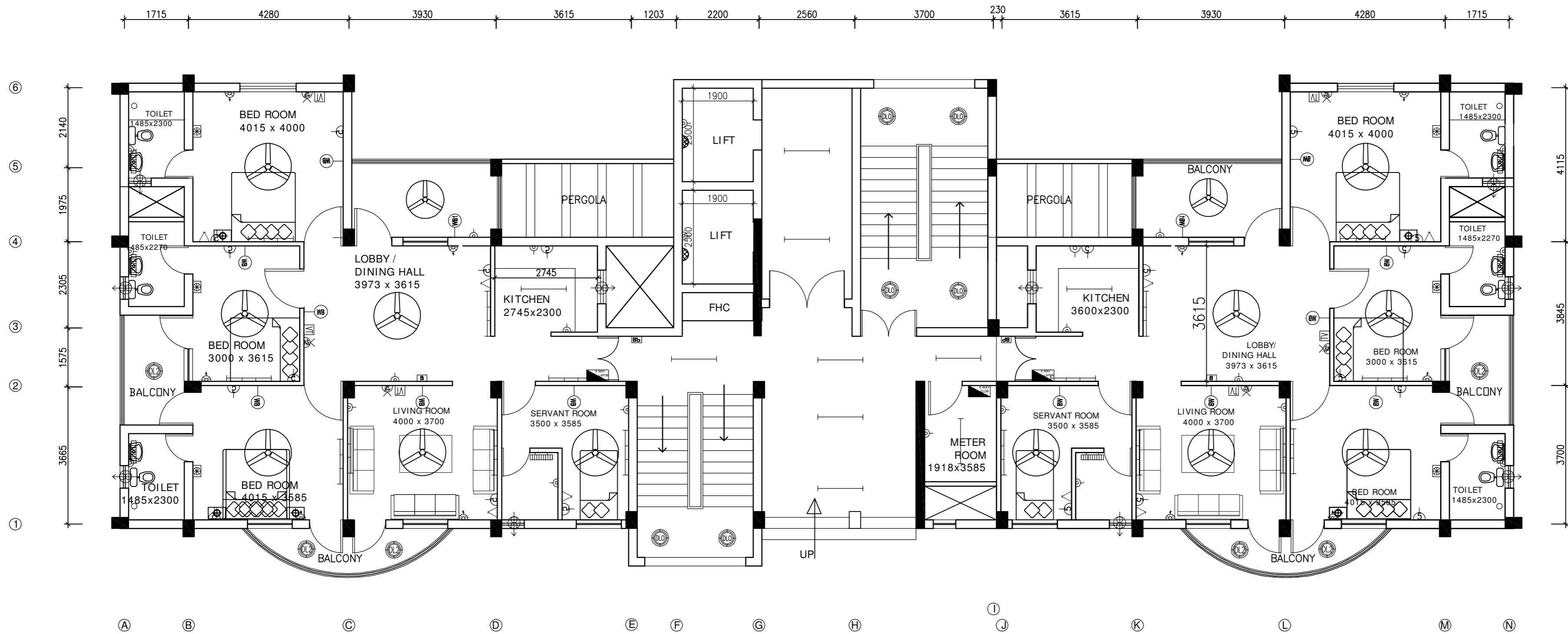
ELECTRICAL LAYOUT

HSCC/D&E/TYPE-IV/NAHAN/ID/EL-101
DRAWING NO.

JOB NO.	NTS SCALE	DATE
App by	Rev. by	Prep. by

HOSPITAL SERVICES CONSULTANCY
CORPORATION (INDIA) LIMITED
(A GOVERNMENT OF INDIA ENTERPRISES)

HSCC
NEW DELHI INDIA



Ground Floor Plan

This drawing with all its contents is the sole intellectual property of the Hospital Services Consultancy Corporation (India) Ltd. Copying of this drawing or part thereof or its use in any form whatsoever without the written permission of HSCC is prohibited.

NOTES

PROJECT

MEDICAL COLLEGE
AT NAHAN,
HIMACHAL PRADESH

TITLE

TENDER DRAWING

TYPE-IV BLOCK
TYPICAL 1ST TO 5TH
FLOOR PLAN

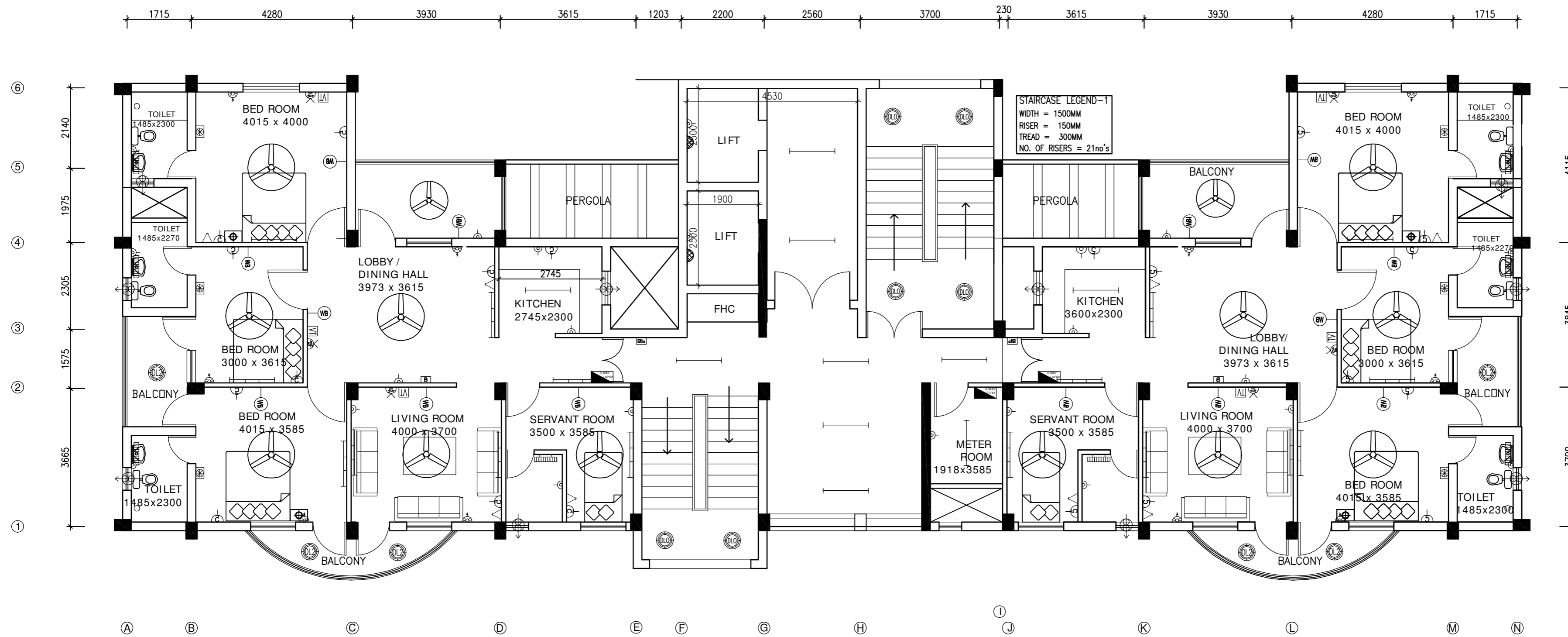
ELECTRICAL LAYOUT

HSCC/D&E/TYPE-IV/NAHAN/TD/EL-102
DRAWING NO.

JOB NO.	NTS SCALE	DATE
App by	Rev. by	Prep. by

HOSPITAL SERVICES CONSULTANCY CORPORATION (INDIA) LIMITED
(A GOVERNMENT OF INDIA ENTERPRISES)

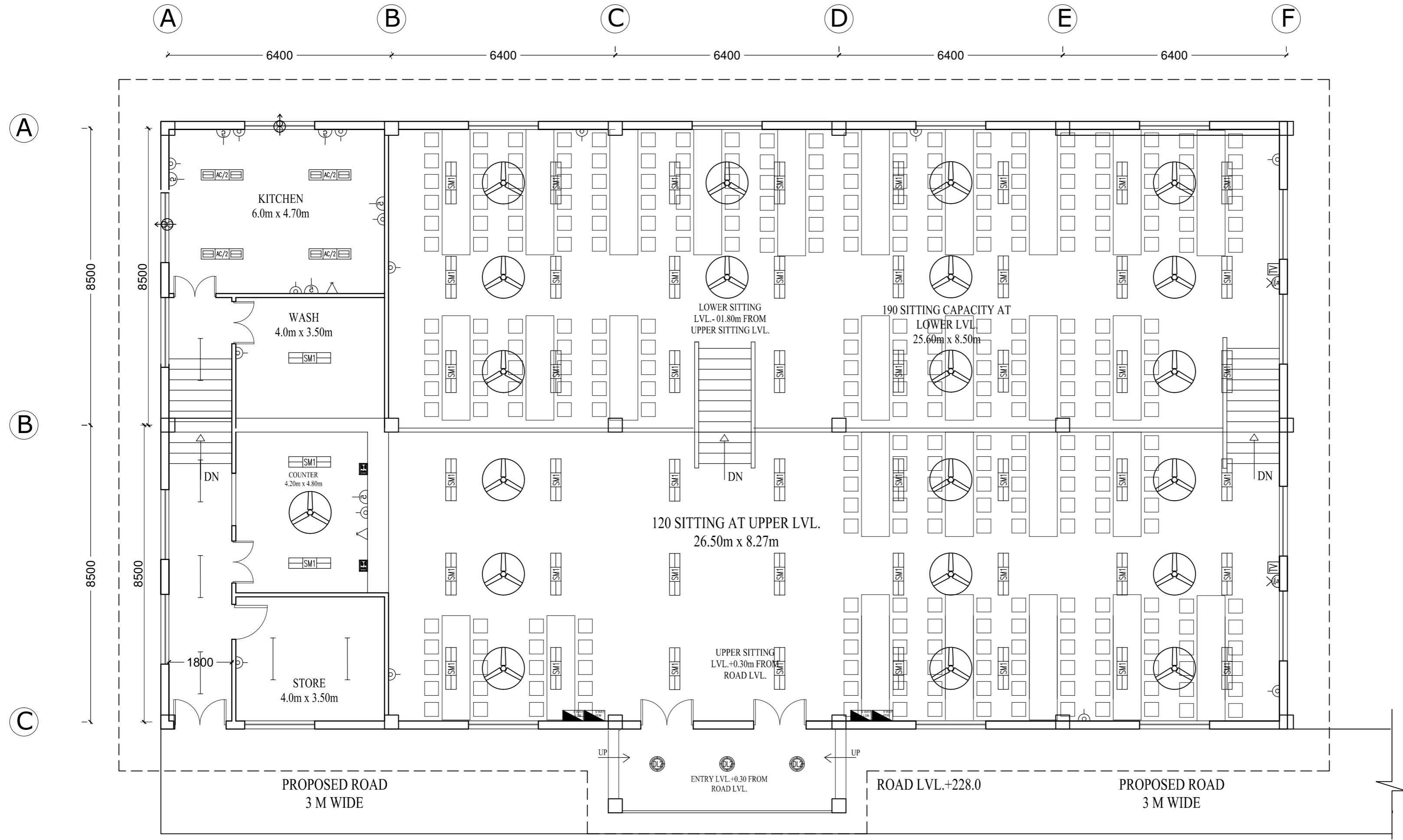
HSCC
NEW DELHI INDIA



Typical 1st to 5th Floor Plan

This drawing with all its contents is the sole intellectual property of the Hospital Services Consultancy Corporation (India) Ltd. Copying of this drawing or part thereof or its use in any form whatsoever without the written permission of HSCC is prohibited.

NOTES



GROUND FLOOR PLAN
 CAPACITY = 310 pax
 AREA = 565.0 sq.m.

PROJECT

MEDICAL COLLEGE
 AT NAHAN,
 HIMACHAL PRADESH

TITLE

TENDER DRAWING

**MESS BLOCK
 GROUND
 FLOOR PLAN
 ELECTRICAL LAYOUT**

HSCC/D&E/MESS BLOCK/NAHAN/TD/EL-401
 DRAWING NO.

JOB NO.	NTS SCALE	DATE
---------	--------------	------

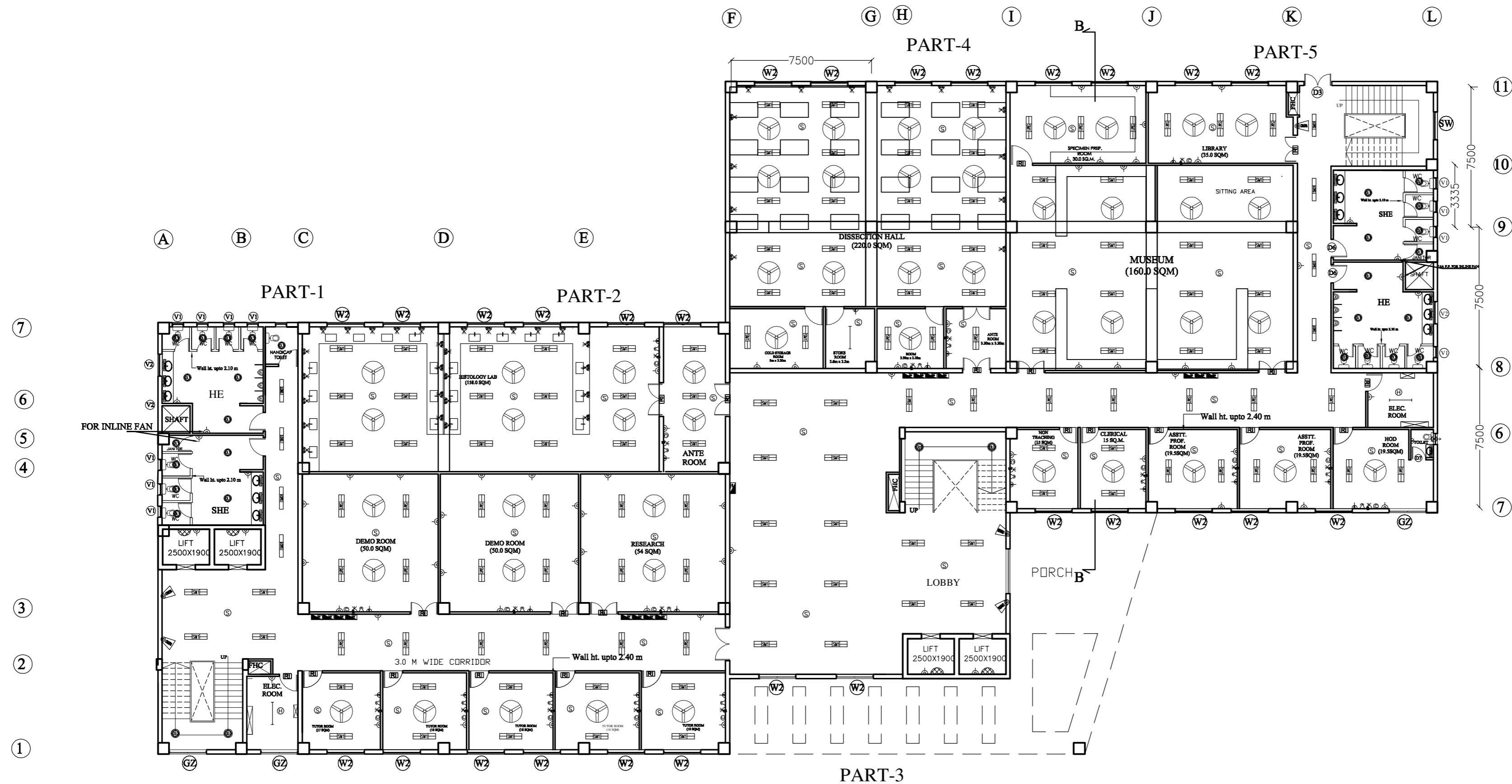
App by	Rev. by	Prep. by
--------	---------	----------

HOSPITAL SERVICES CONSULTANCY
 CORPORATION (INDIA) LIMITED
 (A GOVERNMENT OF INDIA ENTERPRISES)

HSCC
 NEW DELHI INDIA

This drawing with all its contents is the sole intellectual property of the Hospital Services Consultancy Corporation (India) Ltd. Copying of this drawing or part thereof, or its use in any form whatsoever without the written permission of HSCC is prohibited.

NOTES



ANATOMY
FIRST FLOOR PLAN
BLOCK - A
LVL..+4.50M

PROJECT

MEDICAL COLLEGE
ATNAHAN,
HIMACHAL PRADESH

TITLE

TENDER DRAWING
TEACHING BLOCK
FIRST FLOOR
PLAN
ELECTRICAL LAYOUT

HSCC/D&E/TEACHING BLOCK/NAHAN/TD/EL-502
DRAWING NO.

JOB NO.	NTS SCALE	DATE
App by	Rev. by	Prep. by

HOSPITAL SERVICES CONSULTANCY
CORPORATION (INDIA) LIMITED
(A GOVERNMENT OF INDIA ENTERPRISES)

HSCC
NEW DELHI INDIA