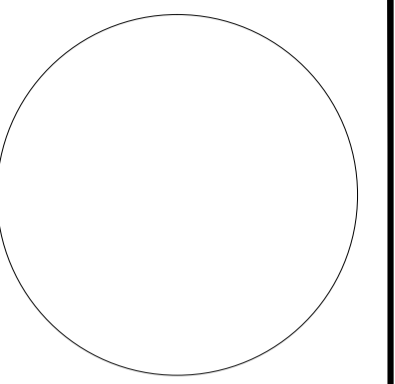
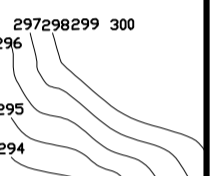


This drawing with all its contents is the sole intellectual property of the Hospital Services Consultancy Corporation (India) Ltd. Copying of this drawing in any form whatsoever without the written permission of HSCC is prohibited.



KEY PLAN



NO.	DATE	ISSUED
PRINTS ISSUED		
REV.	DATE	DESCRIPTION
REVISION		

PROJECT

DR. Y.S. PARMAR
GOVT.MEDICAL
COLLEGE, NAHAN
DSTT.,SIRMOUR(H.P)

TITLE

TENDER
DRAWING

GROUND FLOOR
PLAN

OWNER SIGN

ARCHITECT SIGN

HSCCMC-NAHAN/SDTEACHING BLOCK01

DRAWING NO. R-0 REV.

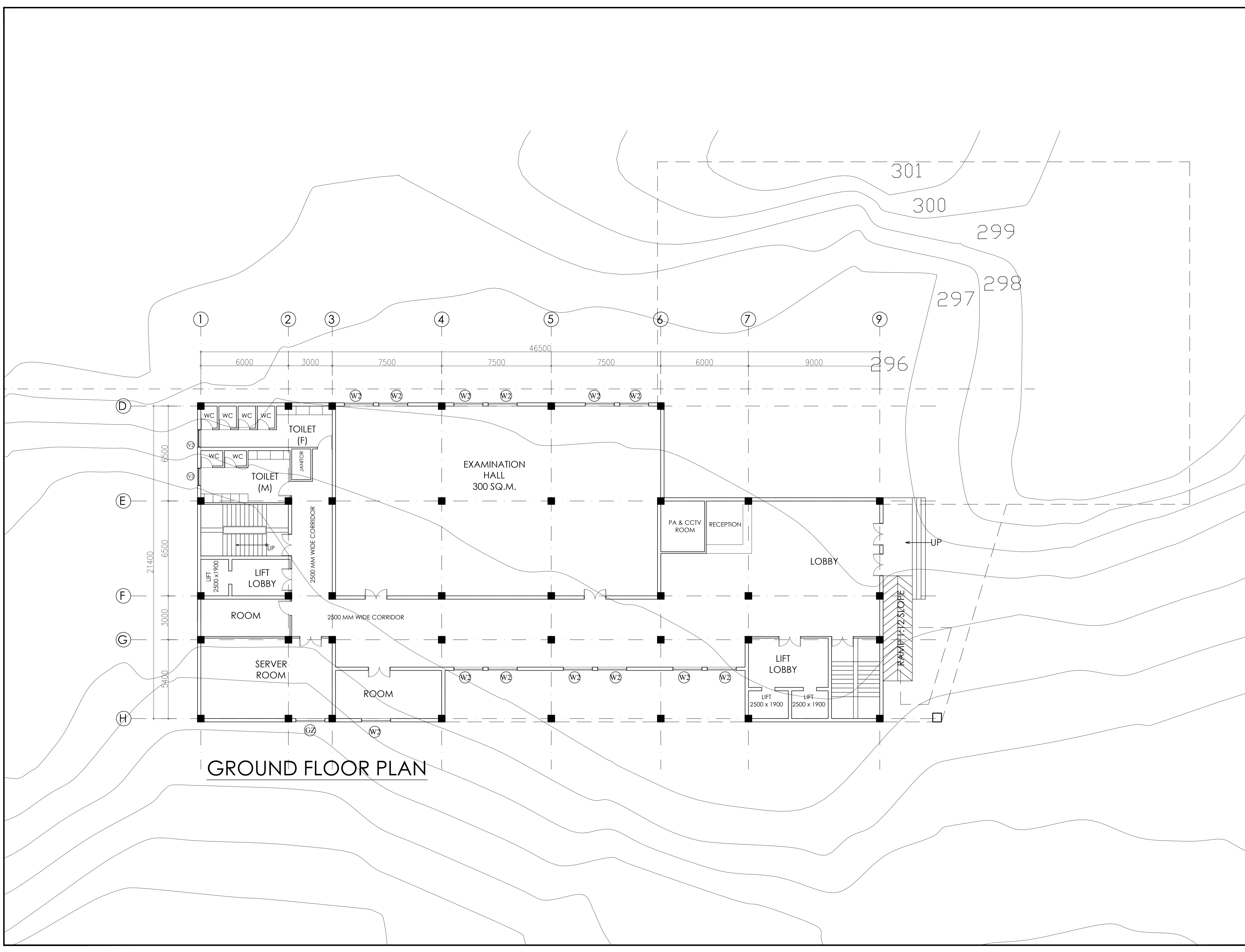
HSCC/115 1:100 05/09/2016

JOB NO. SCALE DATE

App by Rev. by Prep. by

HOSPITAL SERVICES CONSULTANCY
CORPORATION (INDIA) LIMITED
(A GOVERNMENT OF INDIA ENTERPRISE)

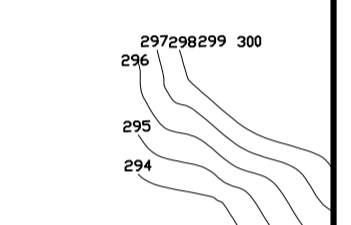
HSCC



GROUND FLOOR PLAN



KEY PLAN



NO.	DATE	ISSUED
PRINTS ISSUED		
REV.	DATE	DESCRIPTION
REVISION		

PROJECT
 DR. Y.S. PARMAR
 GOVT.MEDICAL
 COLLEGE, NAHAN
 DSTT.,SIRMOUR(H.P)

TITLE
 TENDER
 DRAWING

TERRACE FLOOR PLAN

OWNER SIGN

ARCHITECT SIGN

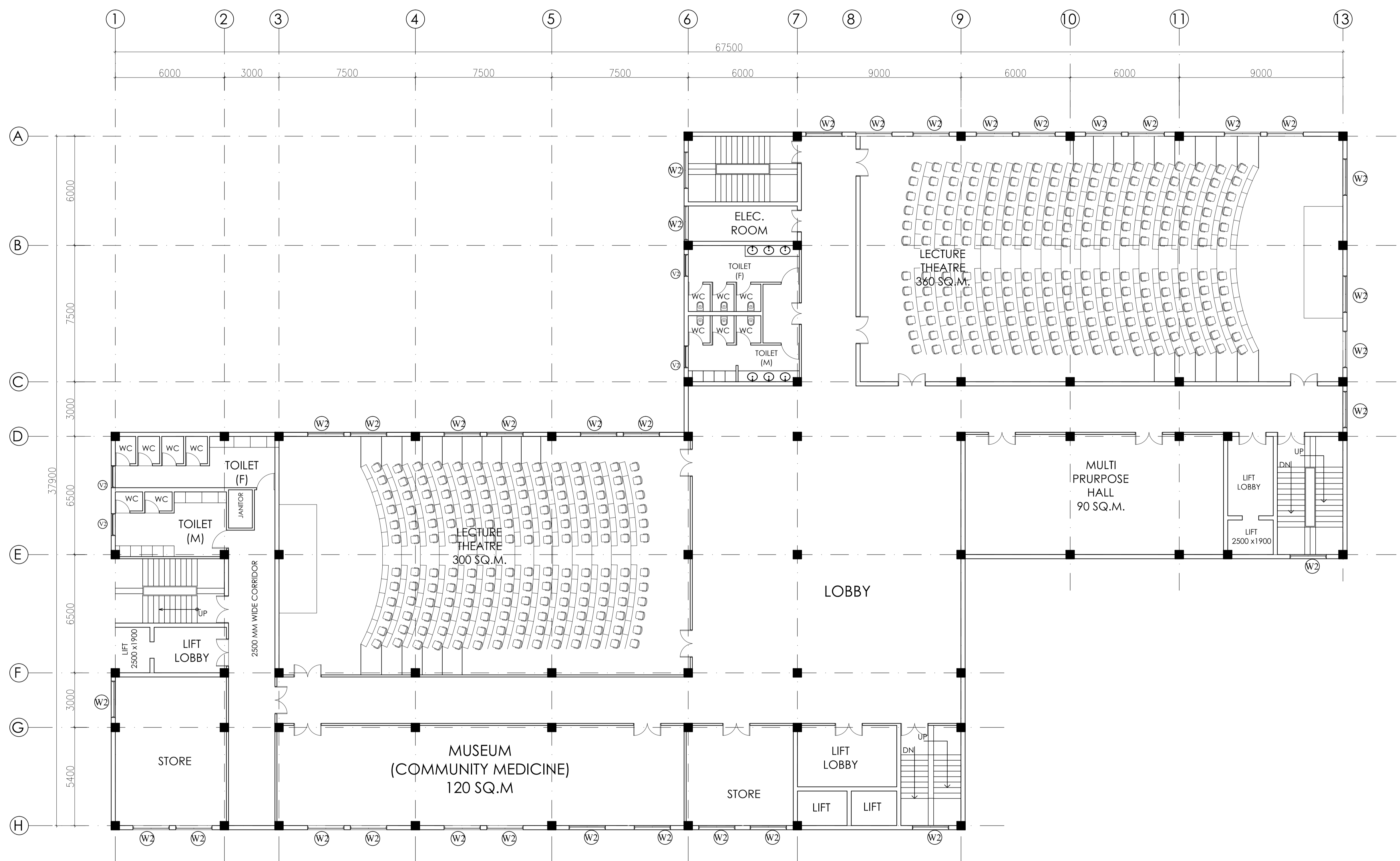
HSCCMC-NAHAN/SDTEACHING BLOCK/10

DRAWING NO.	R-0	
HSCC/115	REV.	
JOB NO.	SCALE	DATE
HSCC/115	1:100	05/09/2016

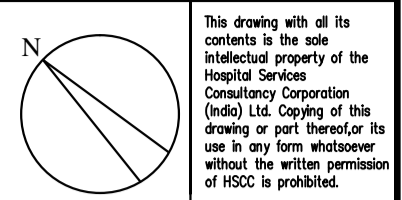
App by Rev. by Prep. by

HOSPITAL SERVICES CONSULTANCY CORPORATION (INDIA) LIMITED (A GOVERNMENT OF INDIA ENTERPRISE)

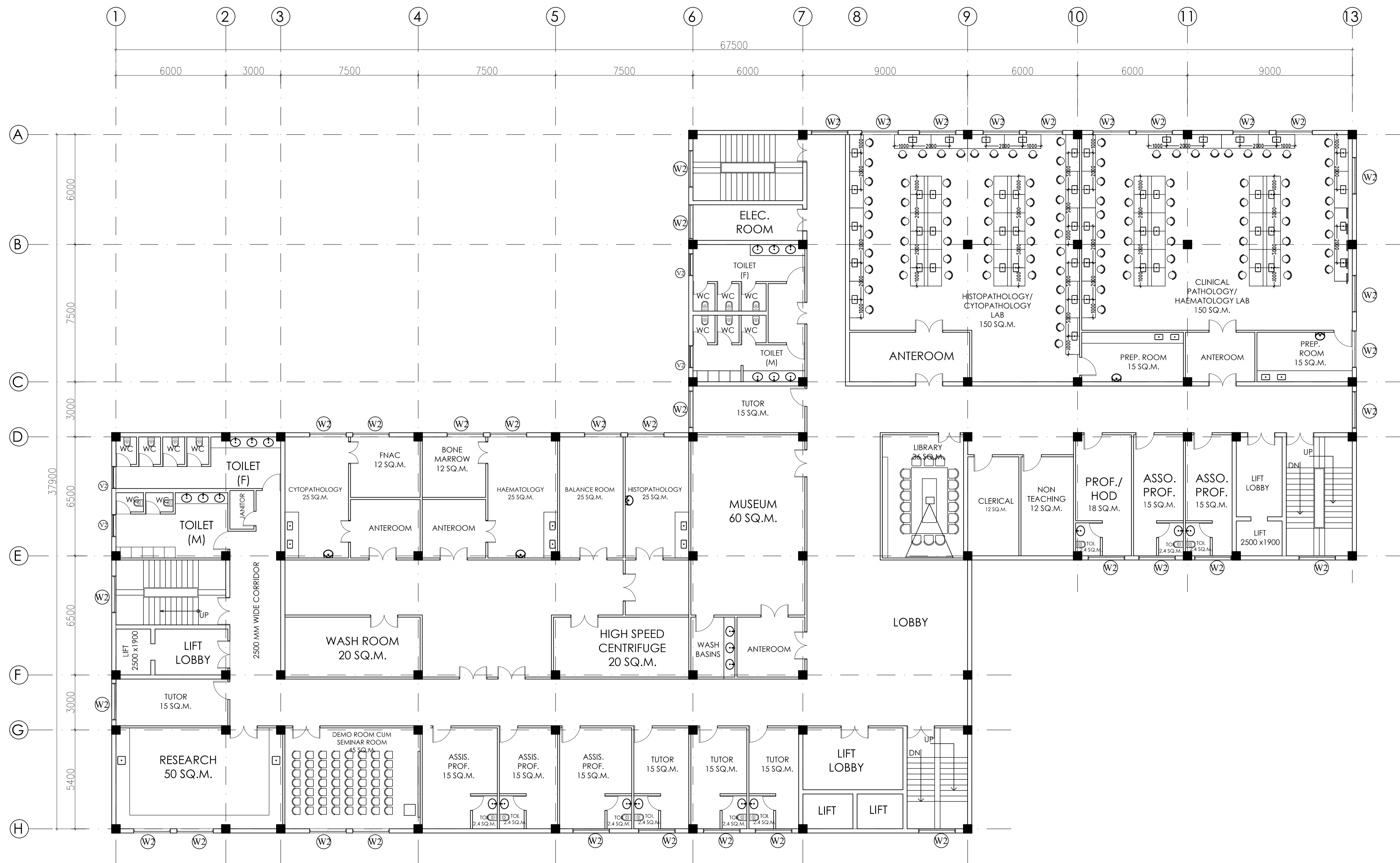
HSCC



LECTURE THEATRES
NINTH FLOOR PLAN

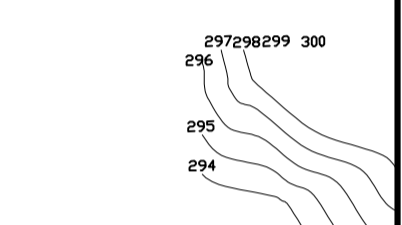


This drawing with all its contents is the sole intellectual property of the Hospital Services Consultancy Corporation (India) Ltd. Copying of this drawing in part or in whole for any use without the written permission of HSCC is prohibited.



**PATHOLOGY DEPT.
SECOND FLOOR PLAN**

KEY PLAN



NO.	DATE	ISSUED
PRINTS ISSUED		
REV.	DATE	DESCRIPTION
REVISION		

PROJECT
DR. Y.S. PARMAR
GOVT.MEDICAL
COLLEGE, NAHAN
DSTT.,SIRMOUR(H.P)

TITLE
TENDER
DRAWING

**SECOND FLOOR
PLAN**

OWNER SIGN

ARCHITECT SIGN

HSCCMC-NAHANSDTEACHING BLOCK03

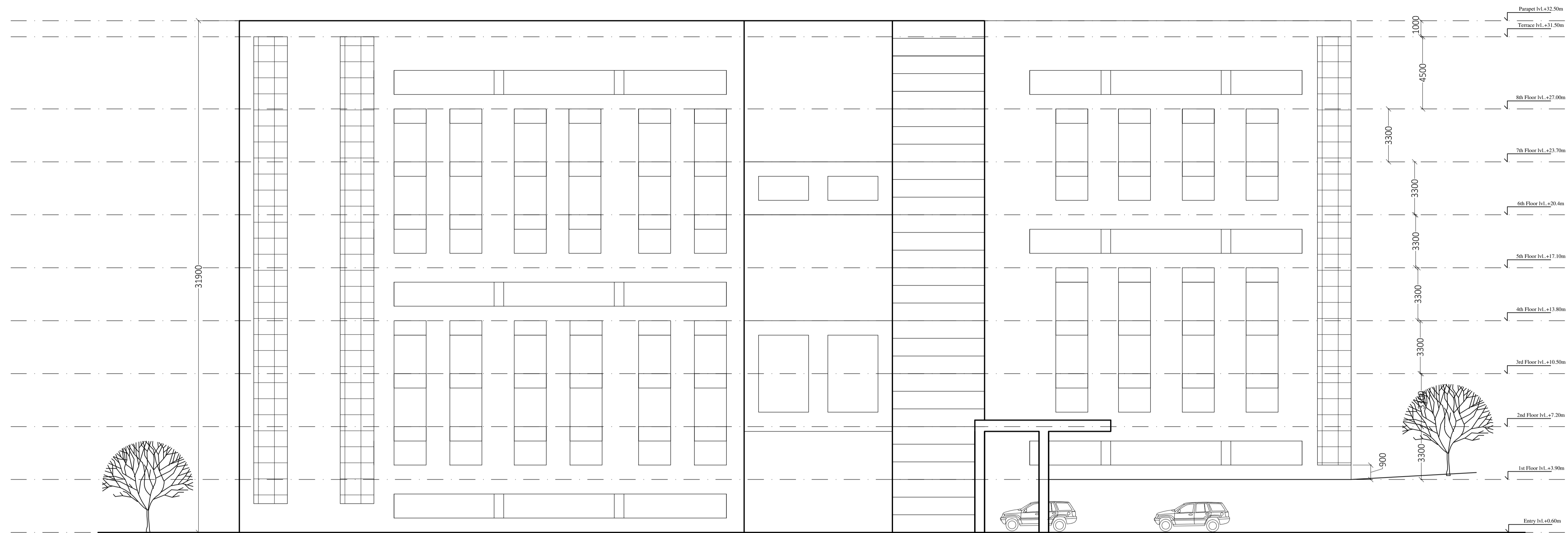
DRAWING NO. R-0
REV.

HSCC/115 1:100 05/09/2016
JOB NO. SCALE DATE

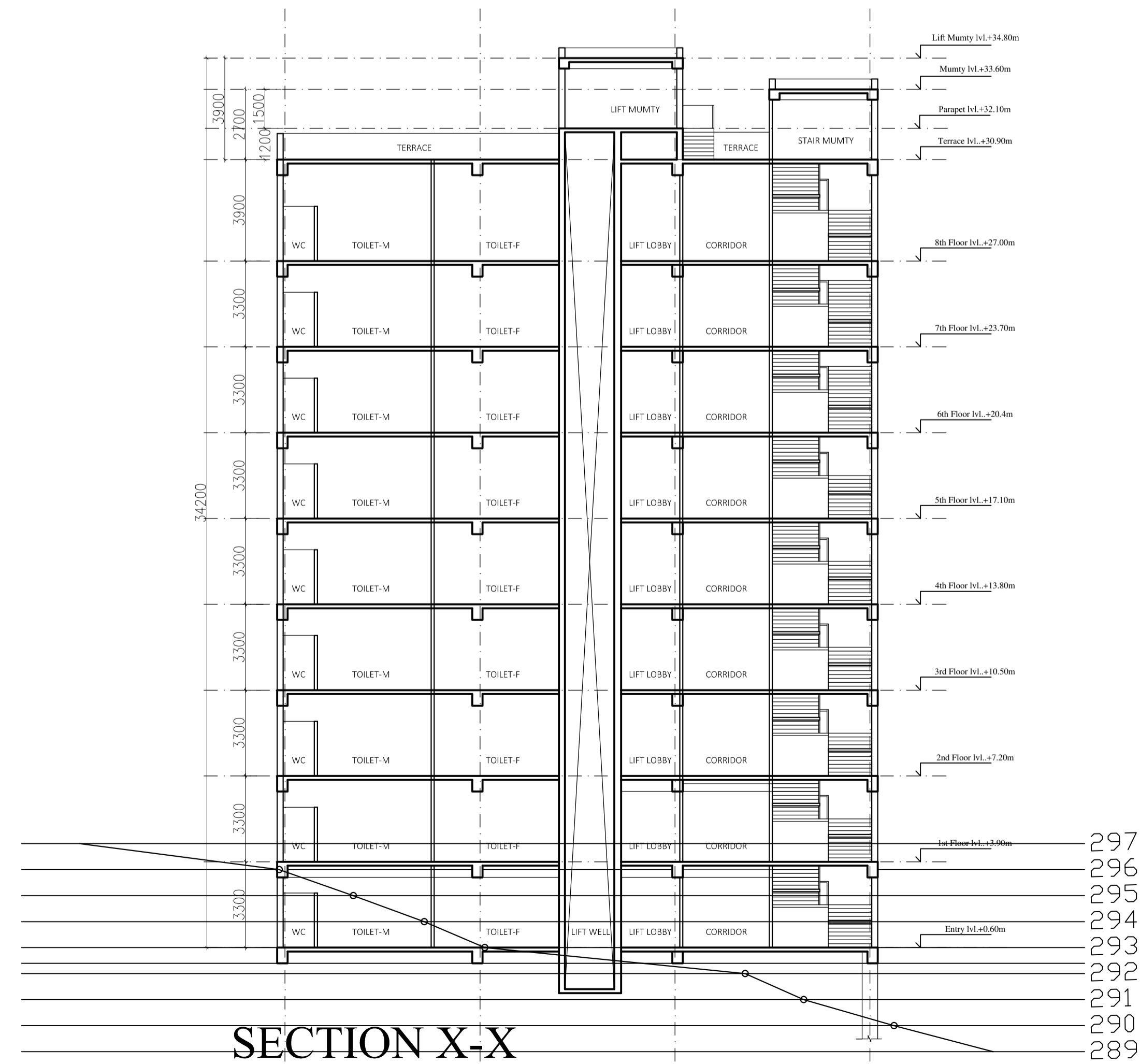
App by Rev. by Prep. by

HOSPITAL SERVICES CONSULTANCY
CORPORATION (INDIA) LIMITED
(A GOVERNMENT OF INDIA ENTERPRISES)

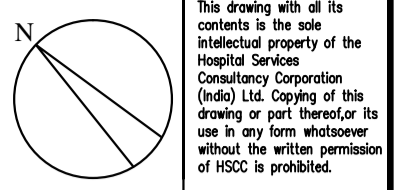
HSCC



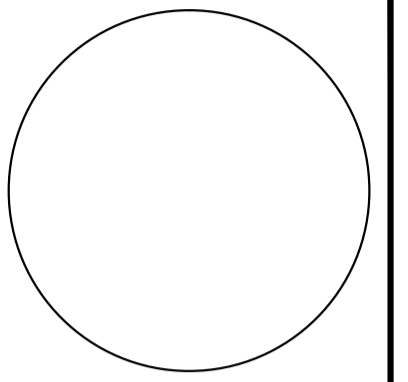
FRONT ELEVATION



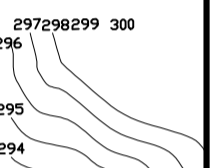
SECTION X-X



This drawing with all its contents is the sole intellectual property of the Hospital Services Consultancy Corporation (HSCC) Ltd. Copying of this drawing in any form whatsoever without the written permission of HSCC is prohibited.



KEY PLAN



NO.	DATE	ISSUED
PRINTS ISSUED		
REV.	DATE	DESCRIPTION
REVISION		

PROJECT
DR. Y.S. PARMAR
GOVT.MEDICAL
COLLEGE, NAHAN
DSTT.,SIRMOUR(H.P)

TITLE
TENDER
DRAWING

TERRACE FLOOR
PLAN

OWNER SIGN

ARCHITECT SIGN

HSCCMC-NAHANSDTEACHING BLOCK/11

DRAWING NO. R-0 REV.

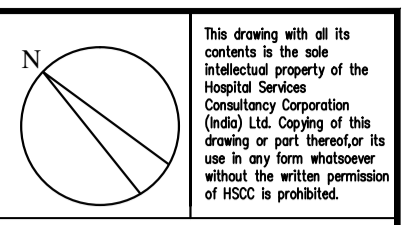
HSCC/115 1:100 05/09/2016

JOB NO. SCALE DATE

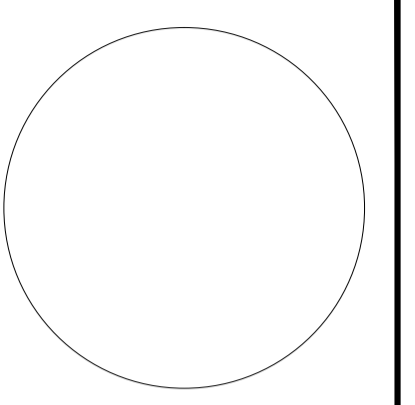
App by Rev. by Prep. by

HOSPITAL SERVICES CONSULTANCY CORPORATION (INDIA) LIMITED (A GOVERNMENT OF INDIA ENTERPRISES)

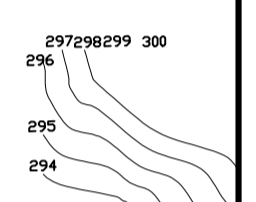
HSCC



This drawing with all its contents is the sole intellectual property of the Hospital Services Consultancy Corporation (India) Ltd. Copying of this drawing in any form whatsoever without the written permission of HSCC is prohibited.



KEY PLAN



NO.	DATE	ISSUED
PRINTS ISSUED		
REV.	DATE	DESCRIPTION
REVISION		

PROJECT
 DR. Y.S. PARMAR
 GOVT.MEDICAL
 COLLEGE, NAHAN
 DSTT.,SIRMOUR(H.P)

TITLE
 TENDER
 DRAWING

**SEVENTH FLOOR
 PLAN**

OWNER SIGN

ARCHITECT SIGN

HSCCMC-NAHANSDTEACHING BLOCK08

DRAWING NO. R-0 REV.

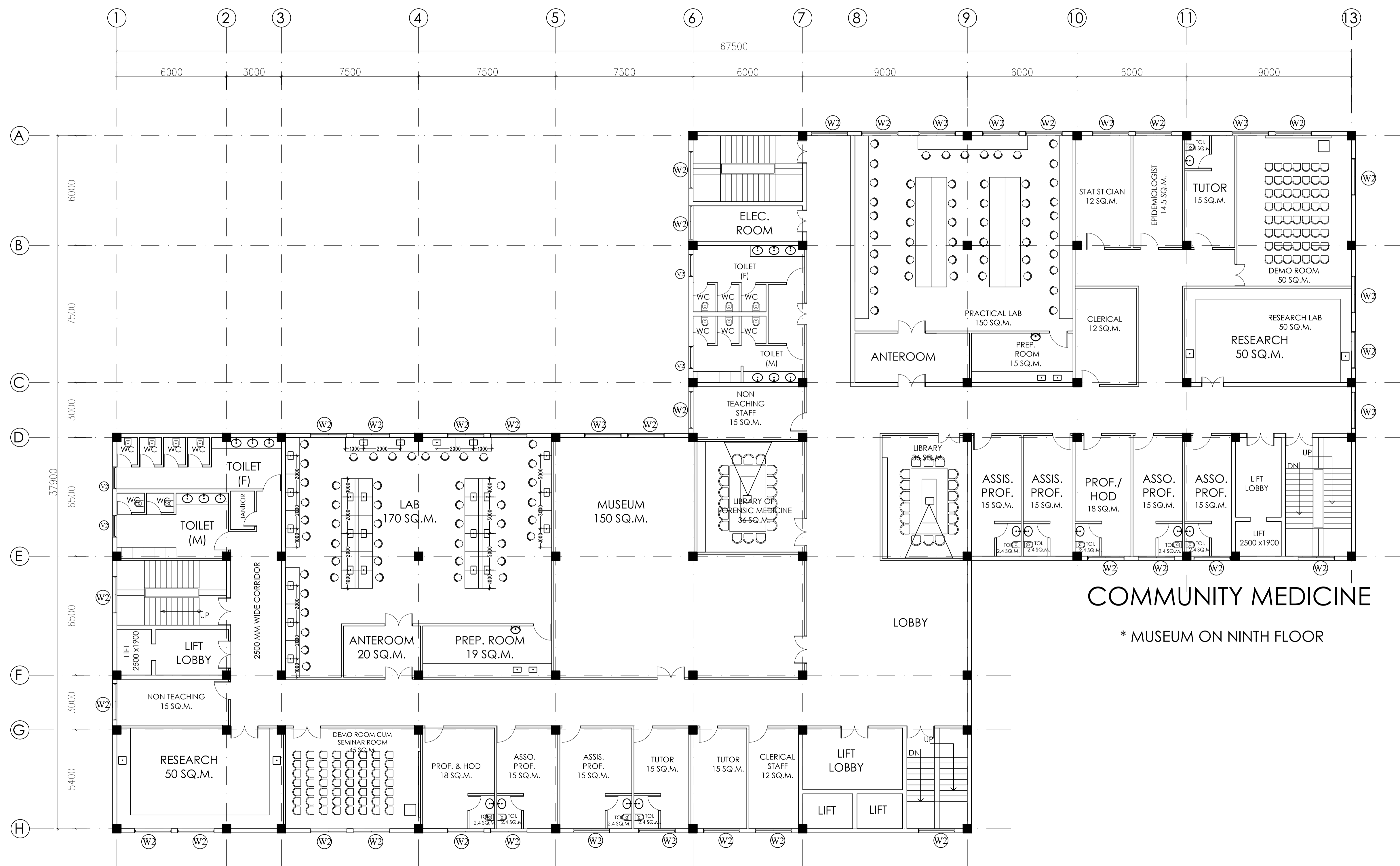
HSCC/115 1:100 05/09/2016

JOB NO. SCALE DATE

App by Rev. by Prep. by

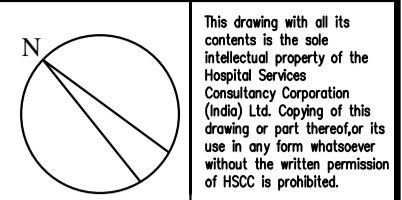
HOSPITAL SERVICES CONSULTANCY CORPORATION (INDIA) LIMITED (A GOVERNMENT OF INDIA ENTERPRISES)

HSCC

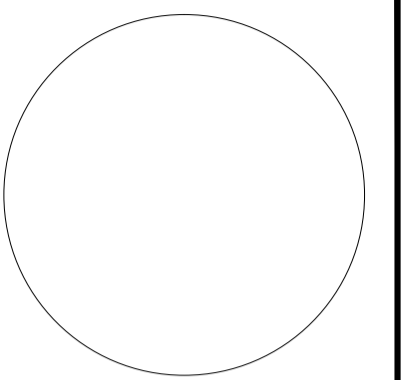


**FORENSIC DEPT.
 SEVENTH FLOOR PLAN**

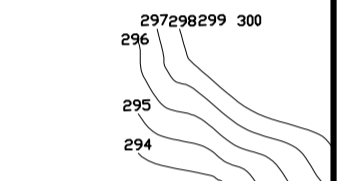
COMMUNITY MEDICINE
 * MUSEUM ON NINTH FLOOR



This drawing with all its contents is the sole intellectual property of the Hospital Services Consultancy Corporation (India) Ltd. Copying of this drawing in part or in whole or its use in any form whatsoever without the written permission of HSCC is prohibited.



KEY PLAN



NO.	DATE	ISSUED
PRINTS ISSUED		
REV.	DATE	DESCRIPTION
REVISION		

PROJECT
DR. Y.S. PARMAR GOVT.MEDICAL COLLEGE, NAHAN DSTT.,SIRMOUR(H.P)

TITLE
TENDER DRAWING

SIXTH FLOOR PLAN

OWNER SIGN

ARCHITECT SIGN

HSCCMC-NAHAN/SDTEACHING BLOCK07

DRAWING NO. R-0 REV.

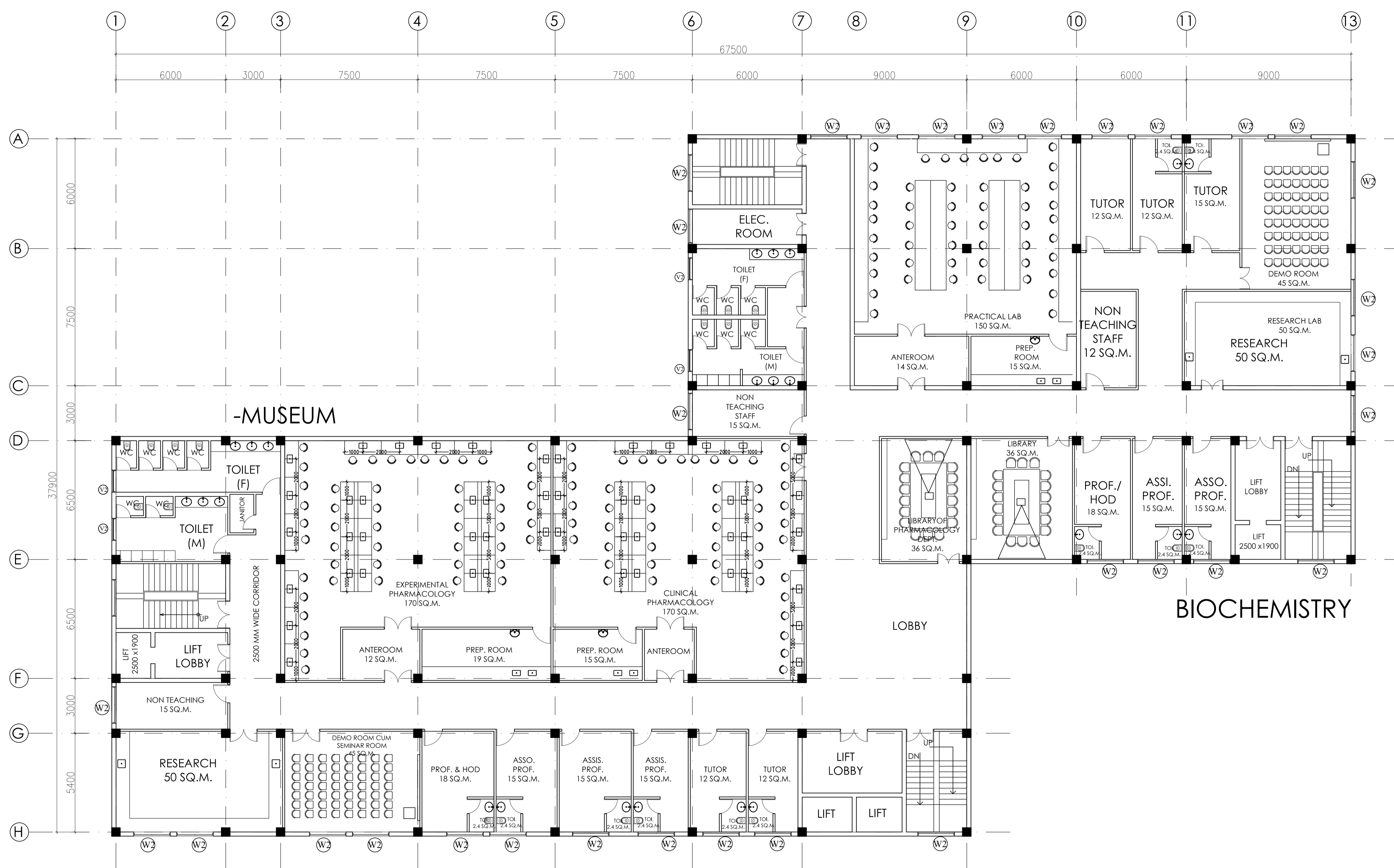
HSCC/115 1:100 05/09/2016

JOB NO. SCALE DATE

App by Rev. by Prep. by

HOSPITAL SERVICES CONSULTANCY CORPORATION (INDIA) LIMITED (A GOVERNMENT OF INDIA ENTERPRISE)

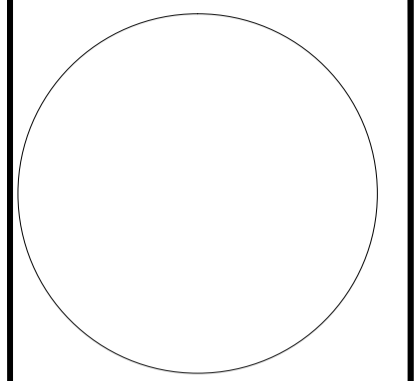
HSCC



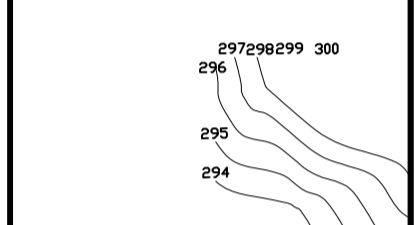
PHARMACOLOGY DEPT.
SIXTH FLOOR PLAN

* MUSEUM ON EIGHTH FLOOR

This drawing with all its contents is the sole intellectual property of the Hospital Services Consultancy Corporation (India) Ltd. Copying of this drawing or part thereof for its use in any form whatsoever without the written permission of HSCC is prohibited.



KEY PLAN



NO.	DATE	ISSUED
PRINTS ISSUED		
REV.	DATE	DESCRIPTION
REVISION		

PROJECT
 DR. Y.S. PARMAR
 GOVT. MEDICAL
 COLLEGE, NAHAN
 DISTT., SIRMOUR (H.P.)

TITLE
TENDER DRAWING
THIRD FLOOR PLAN

OWNER SIGN

ARCHITECT SIGN

HSCCMC-NAHANSD/TEACHING BLOCK/04

DRAWING NO. R-0

REV.

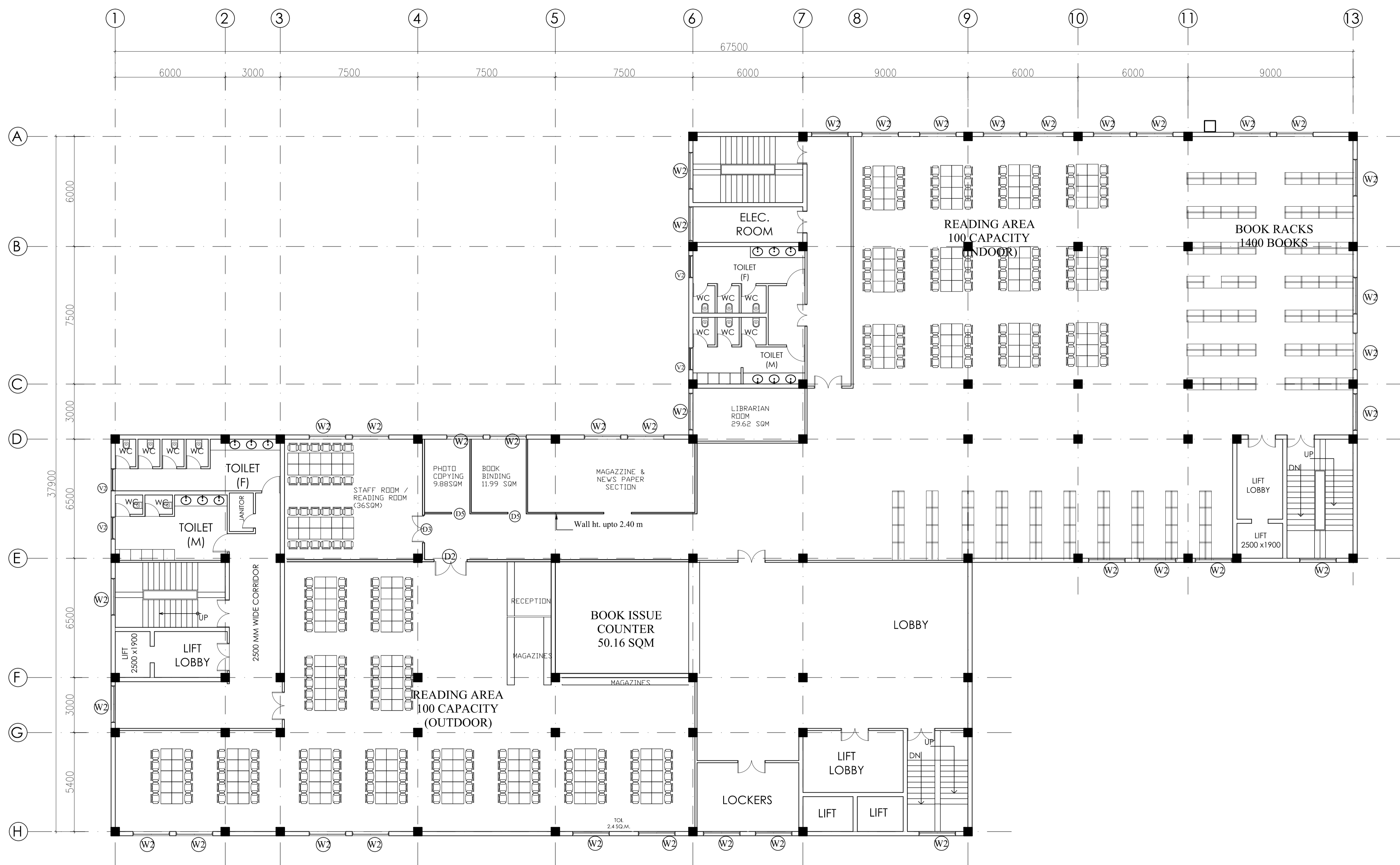
HSCC/115 1:100 05/09/2016

JOB NO. SCALE DATE

App by Rev. by Prep. by

HOSPITAL SERVICES CONSULTANCY CORPORATION (INDIA) LIMITED (A GOVERNMENT OF INDIA ENTERPRISE)

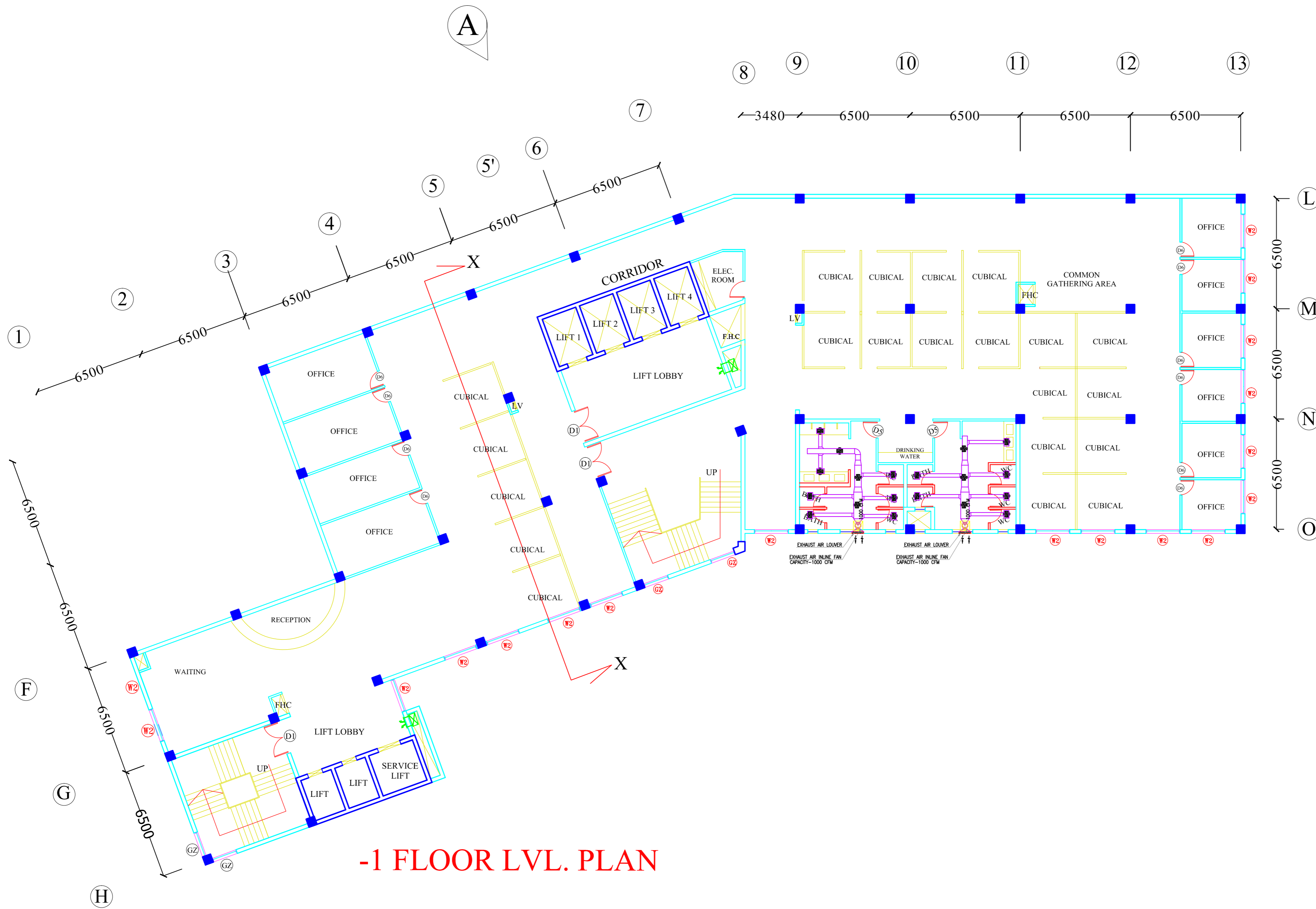
HSCC



**LIBRARY
 THIRD FLOOR PLAN**

PRODUCED BY AN AUTODESK EDUCATIONAL PRODUCT

PRODUCED BY AN AUTODESK EDUCATIONAL PRODUCT



-1 FLOOR LVL. PLAN

This drawing with all its contents is the sole intellectual property of the Hospital Services Consultancy Corporation (India) Ltd. Copying of this drawing or part thereof or its use in any form whatsoever without the written permission of HSCC is prohibited.

NOTES

REV	DATE	DESCRIPTION

REV	DATE	DESCRIPTION

REVISION

PROJECT
 MEDICAL COLLEGE
 AT NAHAN,
 HIMACHAL PRADESH

TITLE

TENDER DRAWING
 (SCHEME PURPOSE ONLY)

HVAC LAYOUT
 HOSPITAL BLOCK
 -1 FLOOR PLAN

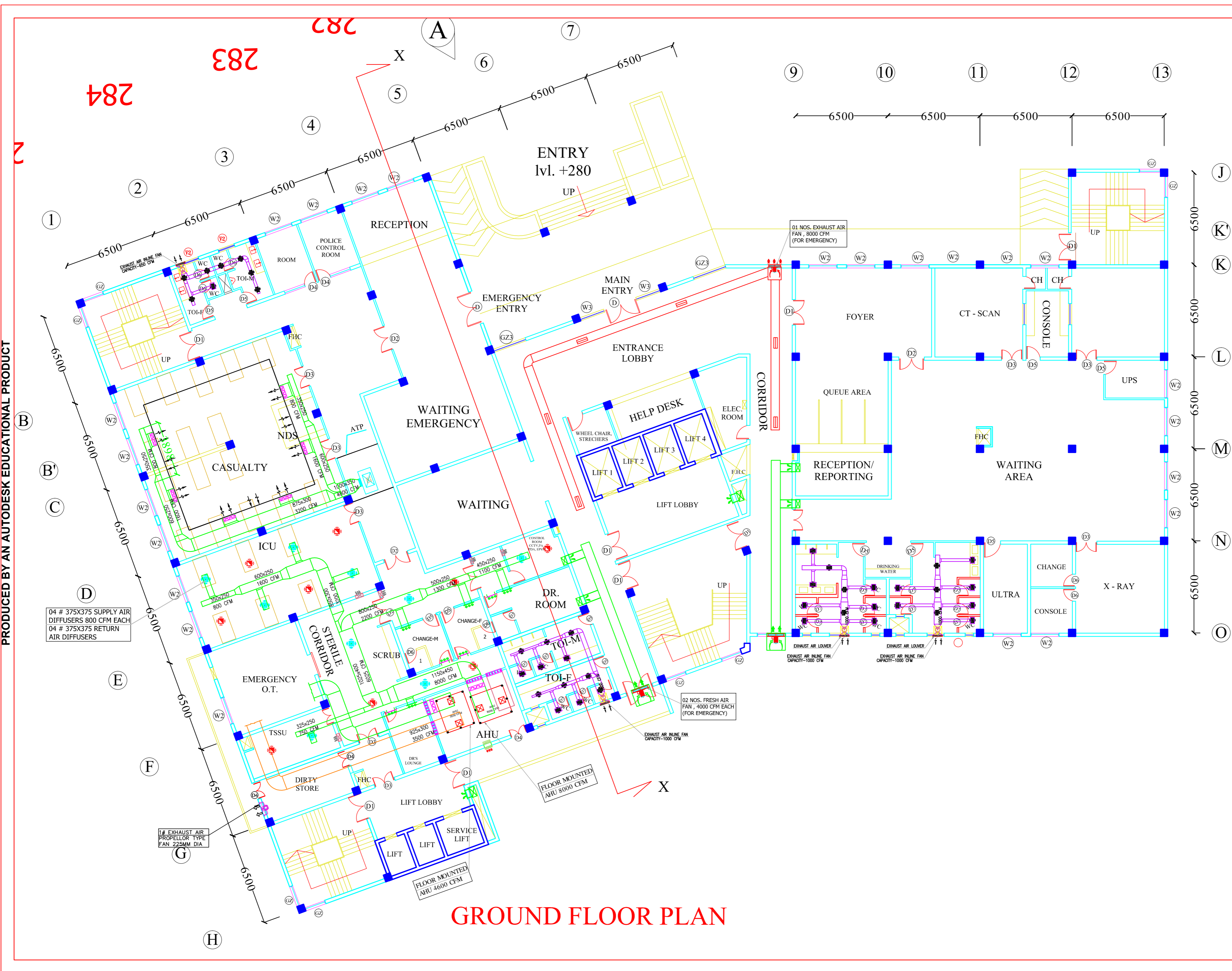
HSCC/D&E/HVAC/NAHAN/AC-01
 Drawing No.

Job No. 1:100 Scale 1.06.2015 Date

App by Chkd. by Prep. by

HSCC (INDIA) LIMITED
 (A GOVERNMENT OF INDIA ENTERPRISES)

HSCC
 NEW DELHI INDIA



GROUND FLOOR PLAN

This drawing with all its contents is the sole intellectual property of the Hospital Services Consultancy Corporation (India) Ltd. Copying of this drawing or part thereof or its use in any form whatsoever without the written permission of HSCC is prohibited.

NOTES

REV	DATE	DESCRIPTION

--	--	--

--	--	--

PROJECT
 MEDICAL COLLEGE
 AT NAHAN,
 HIMACHAL PRADESH

TITLE
 TENDER DRAWING
 (SCHEME PURPOSE ONLY)

HVAC LAYOUT
 HOSPITAL BLOCK
 GROUND FLOOR

HSCC/D&E/HVAC/NAHAN/AC-04
 Drawing No.

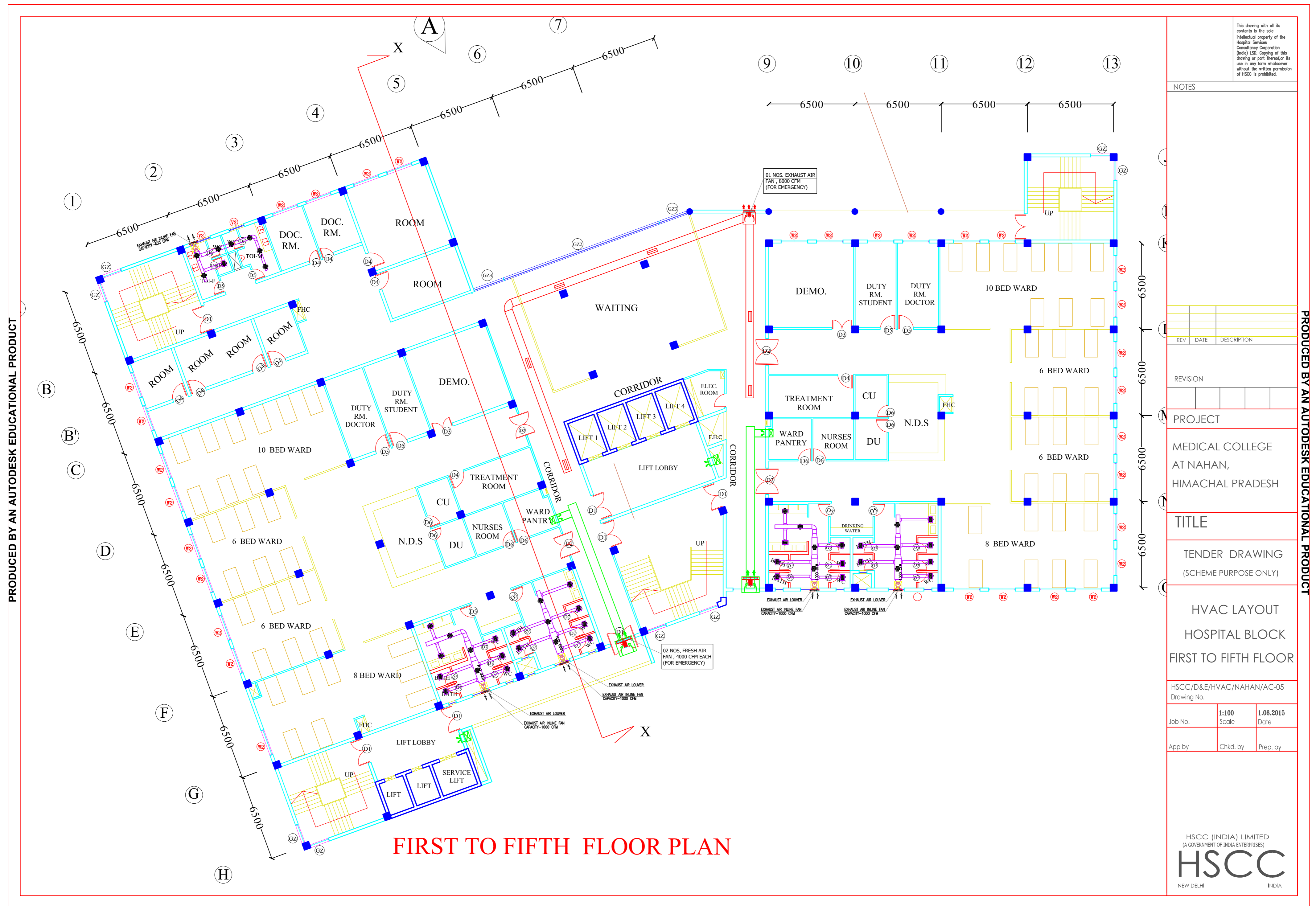
Job No.	1:100 Scale	1.06.2015 Date
App by	Chkd. by	Prep. by

HSCC (INDIA) LIMITED
 (A GOVERNMENT OF INDIA ENTERPRISES)

HSCC
 NEW DELHI INDIA

PRODUCED BY AN AUTODESK EDUCATIONAL PRODUCT

PRODUCED BY AN AUTODESK EDUCATIONAL PRODUCT



FIRST TO FIFTH FLOOR PLAN

This drawing with all its contents is the sole intellectual property of the Hospital Services Consultancy Corporation (India) Ltd. Copying of this drawing or part thereof or its use in any form whatsoever without the written permission of HSCC is prohibited.

NOTES

REV	DATE	DESCRIPTION

REVISION

PROJECT

MEDICAL COLLEGE
AT NAHAN,
HIMACHAL PRADESH

TITLE

TENDER DRAWING
(SCHEME PURPOSE ONLY)

HVAC LAYOUT
HOSPITAL BLOCK
FIRST TO FIFTH FLOOR

HSCC/D&E/HVAC/NAHAN/AC-05
Drawing No.

Job No.	1:100 Scale	1.06.2015 Date
App by	Chkd. by	Prep. by

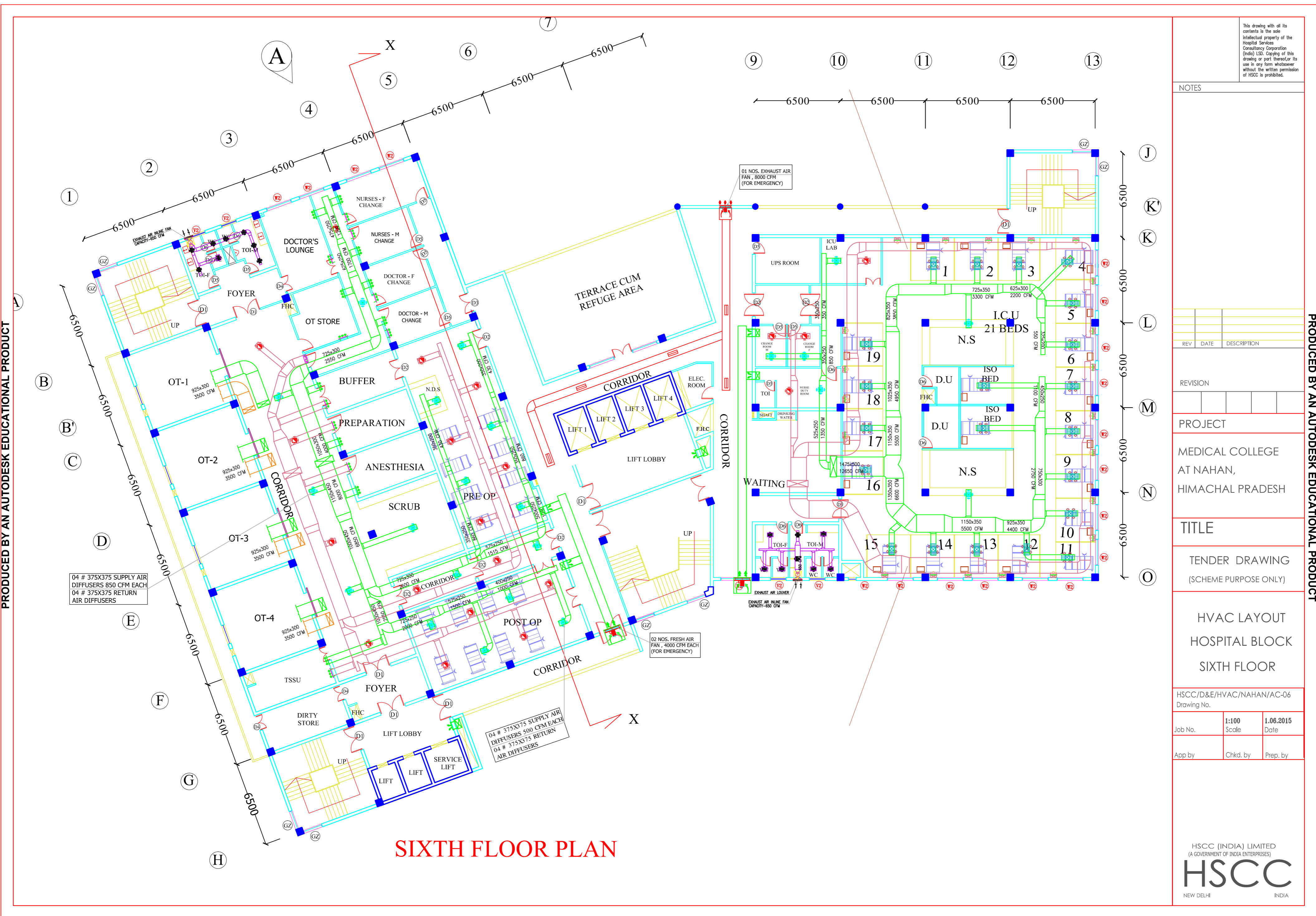
HSCC (INDIA) LIMITED
(A GOVERNMENT OF INDIA ENTERPRISE)

HSCC

NEW DELHI INDIA

PRODUCED BY AN AUTODESK EDUCATIONAL PRODUCT

PRODUCED BY AN AUTODESK EDUCATIONAL PRODUCT



SIXTH FLOOR PLAN

This drawing with all its contents is the sole intellectual property of the Hospital Services Consultancy Corporation (India) Ltd. Copying of this drawing or part thereof or its use in any form whatsoever without the written permission of HSCC is prohibited.

NOTES

REV	DATE	DESCRIPTION

REVISION

PROJECT
 MEDICAL COLLEGE
 AT NAHAN,
 HIMACHAL PRADESH

TITLE
 TENDER DRAWING
 (SCHEME PURPOSE ONLY)

HVAC LAYOUT
 HOSPITAL BLOCK
 SIXTH FLOOR

HSCC/D&E/HVAC/NAHAN/AC-06
 Drawing No.

Job No.	1:100 Scale	1.06.2015 Date
App by	Chkd. by	Prep. by

HSCC (INDIA) LIMITED
 (A GOVERNMENT OF INDIA ENTERPRISE)

HSCC

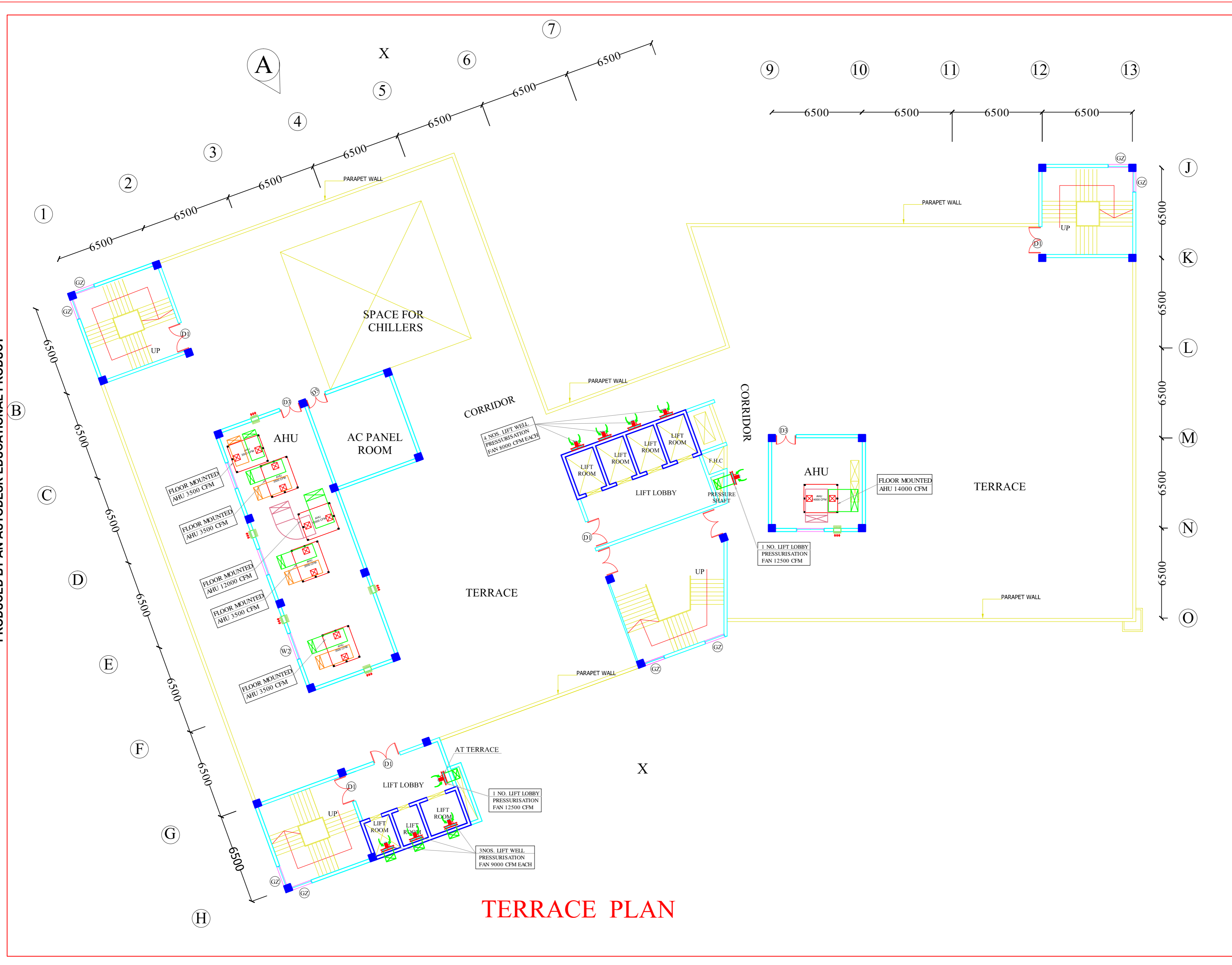
NEW DELHI INDIA

PRODUCED BY AN AUTODESK EDUCATIONAL PRODUCT

PRODUCED BY AN AUTODESK EDUCATIONAL PRODUCT

PRODUCED BY AN AUTODESK EDUCATIONAL PRODUCT

PRODUCED BY AN AUTODESK EDUCATIONAL PRODUCT



TERRACE PLAN

This drawing with all its contents is the sole intellectual property of the Hospital Services Consultancy Corporation (India) Ltd. Copying of this drawing or part thereof or its use in any form whatsoever without the written permission of HSCC is prohibited.

NOTES

REVISION

REV	DATE	DESCRIPTION

PROJECT

MEDICAL COLLEGE AT NAHAN, HIMACHAL PRADESH

TITLE

TENDER DRAWING (SCHEME PURPOSE ONLY)

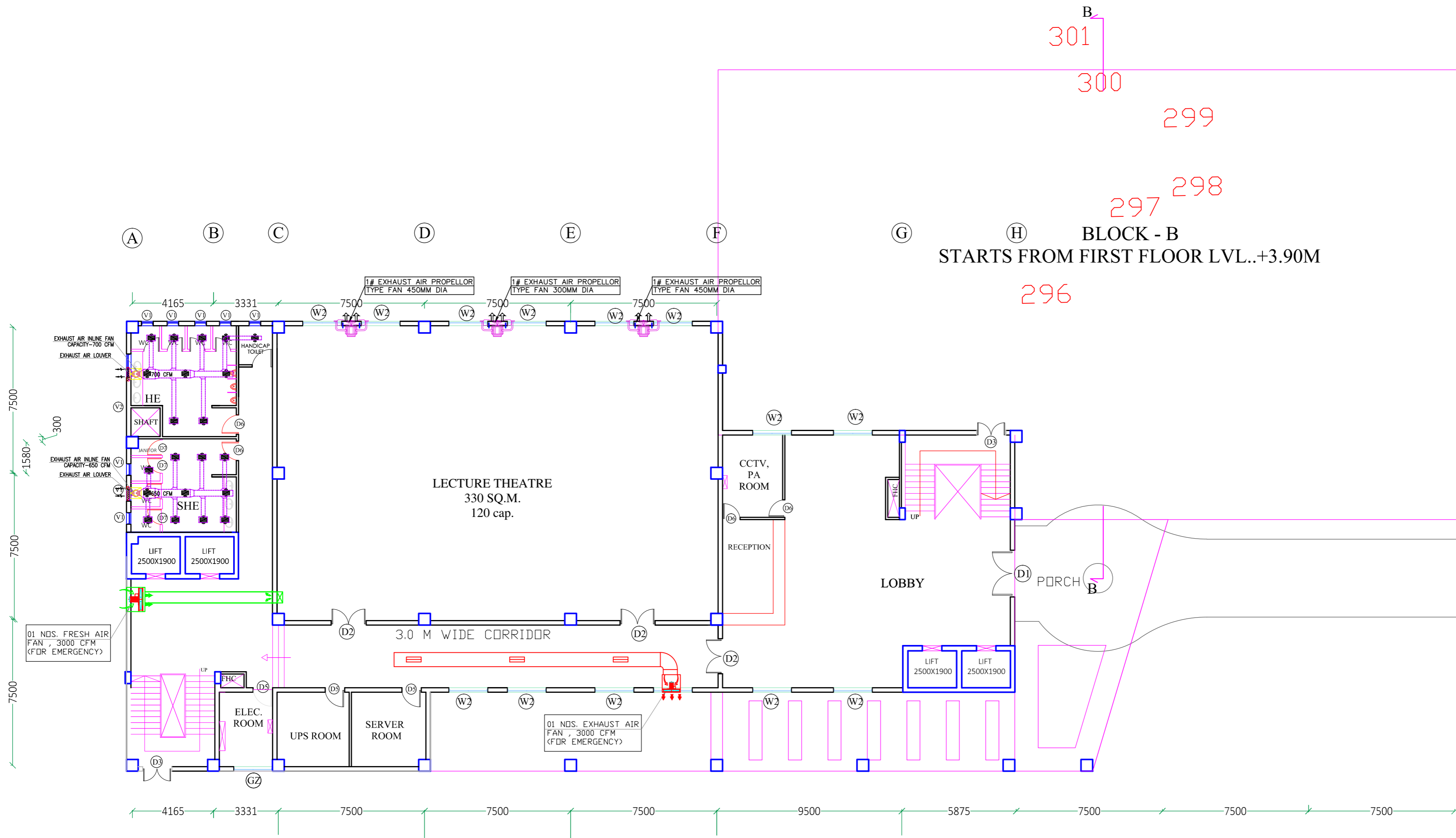
HVAC LAYOUT HOSPITAL BLOCK TERRACE FLOOR

HSCC/D&E/HVAC/NAHAN/AC-07 Drawing No.

Job No.	1:100 Scale	1.06.2015 Date
App by	Chkd. by	Prep. by

HSCC (INDIA) LIMITED
(A GOVERNMENT OF INDIA ENTERPRISE)
HSCC
NEW DELHI INDIA

PRODUCED BY AN AUTODESK EDUCATIONAL PRODUCT



AUDITORIUM / LECTURE THEATRE
GROUND FLOOR PLAN
BLOCK - A
LVL. +0.0M

This drawing with all its contents is the sole intellectual property of the Hospital Services Consultancy Corporation (India) Ltd. Copying of this drawing or part thereof or its use in any form whatsoever without the written permission of HSCC is prohibited.

NOTES

REV	DATE	DESCRIPTION

REVISION

PROJECT

MEDICAL COLLEGE
AT NAHAN,
HIMACHAL PRADESH

TITLE

TENDER DRAWING
(SCHEME PURPOSE ONLY)

HVAC LAYOUT
TEACHING BLOCK
GROUND FLOOR

HSCC/D&E/HVAC/TEACH-BLK/AC-01
Drawing No.

Job No.	1:100 Scale	1.06.2015 Date
App by	Chkd. by	Prep. by

HSCC (INDIA) LIMITED
(A GOVERNMENT OF INDIA ENTERPRISE)

HSCC

NEW DELHI INDIA

PRODUCED BY AN AUTODESK EDUCATIONAL PRODUCT